



# Broadband Access in the San Joaquin Valley & the Central Sierras



**California Public Utilities Commission**  
**Thomas J. Glegola**  
**Supervisor, Communications Division**  
**March 16, 2018**





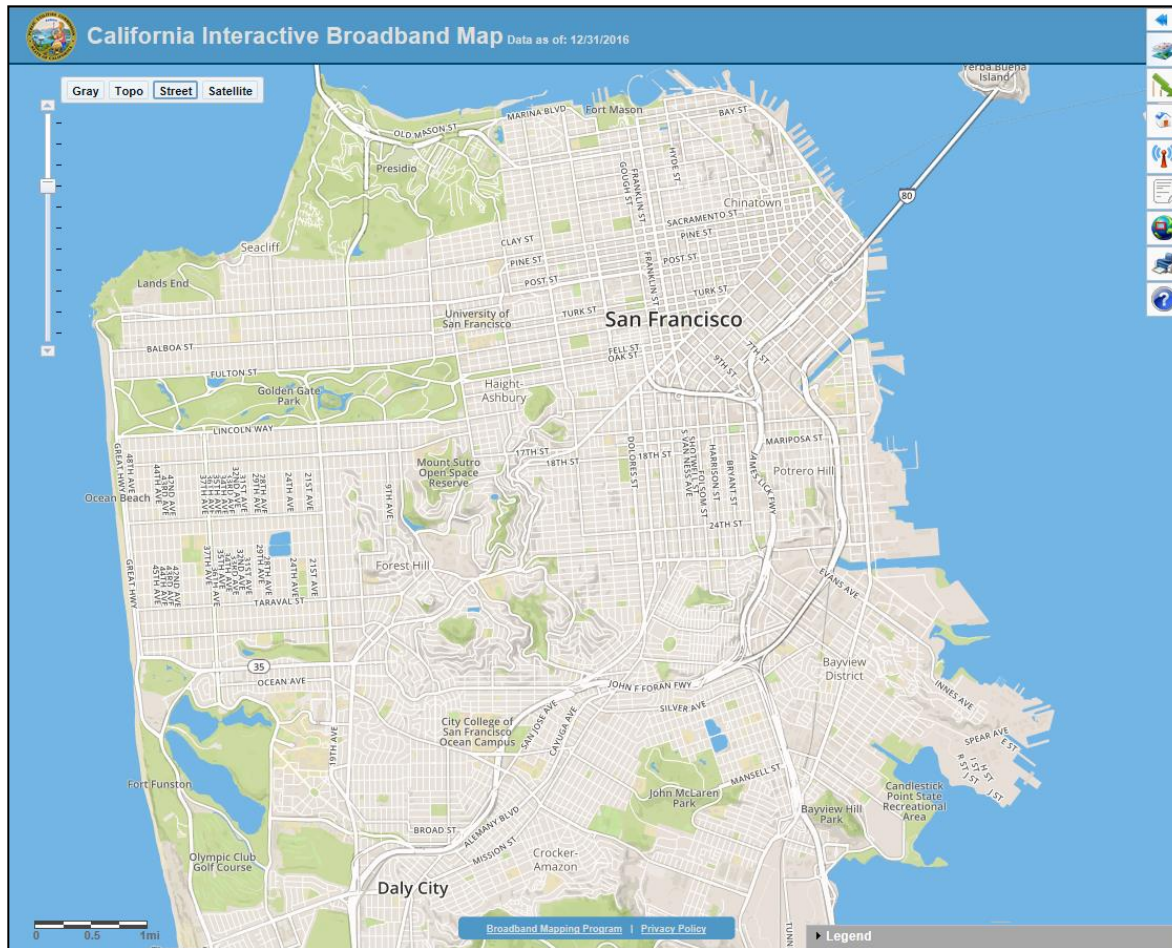
# AB 1665 Key Goals

- 98% households in each Consortia region have access to broadband at speeds of 6/1
- CASF funds do not overbuild FCC Connect America Fund (CAF) support

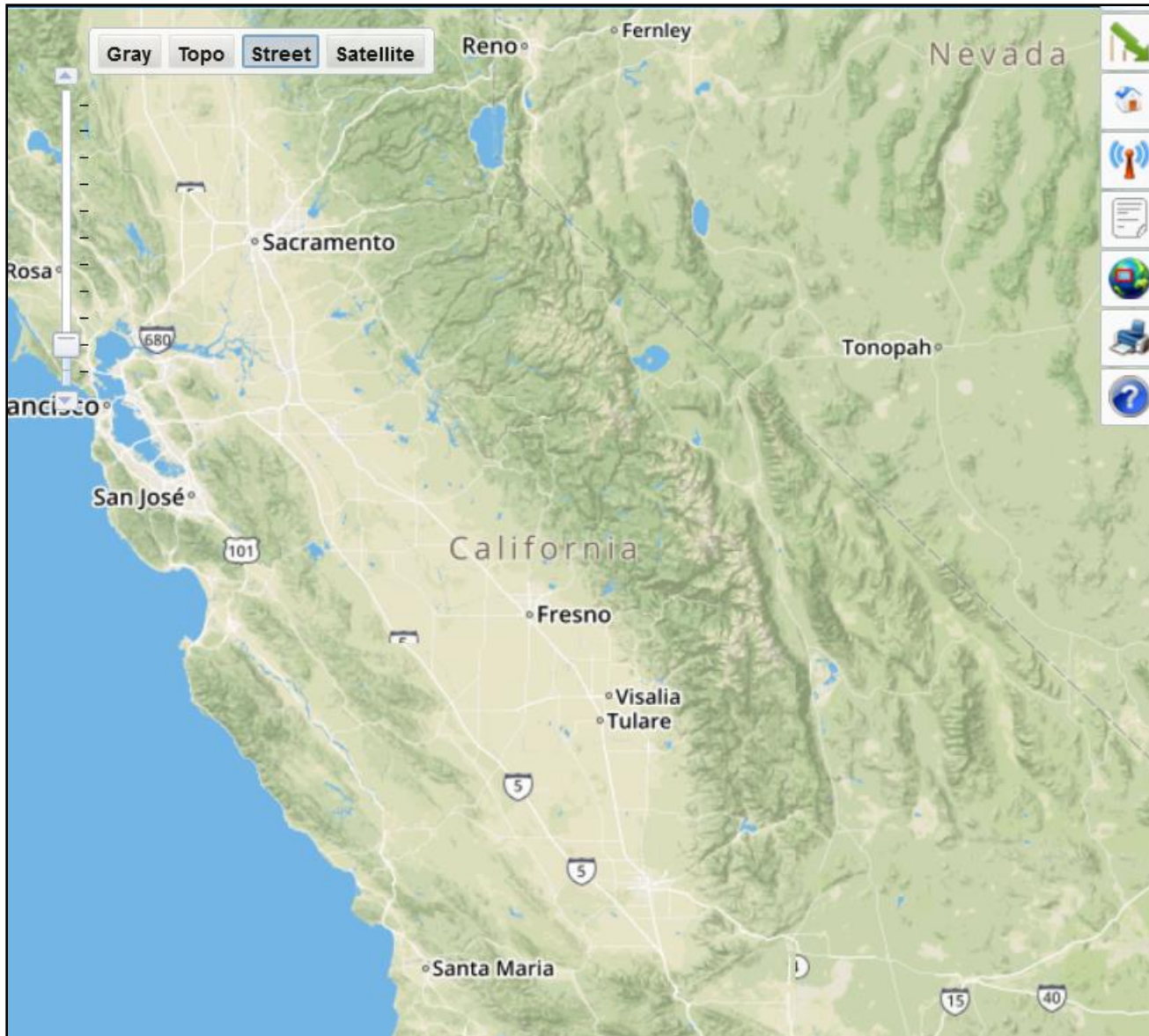




# Interactive Broadband Map

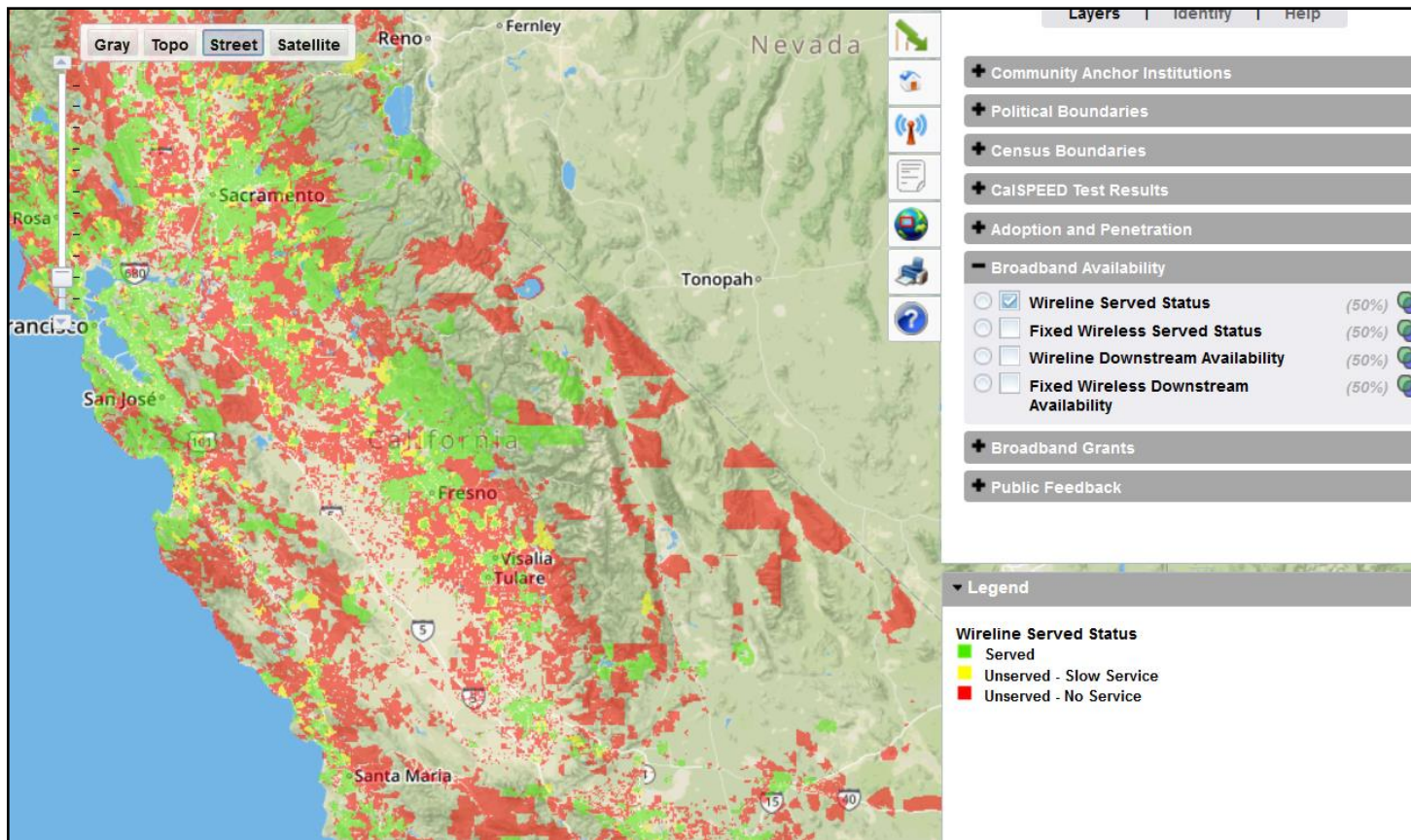








# Wireline Broadband Service






# Served Status

- Served is 6/1 or faster (Mbps)
- Unserved – Slow Service
  - Slower than 6/1
  - Faster than 768/200 Kbps
- Unserved – No Service
  - Slower than 768/200, dial-up only





# Broadband Feedback

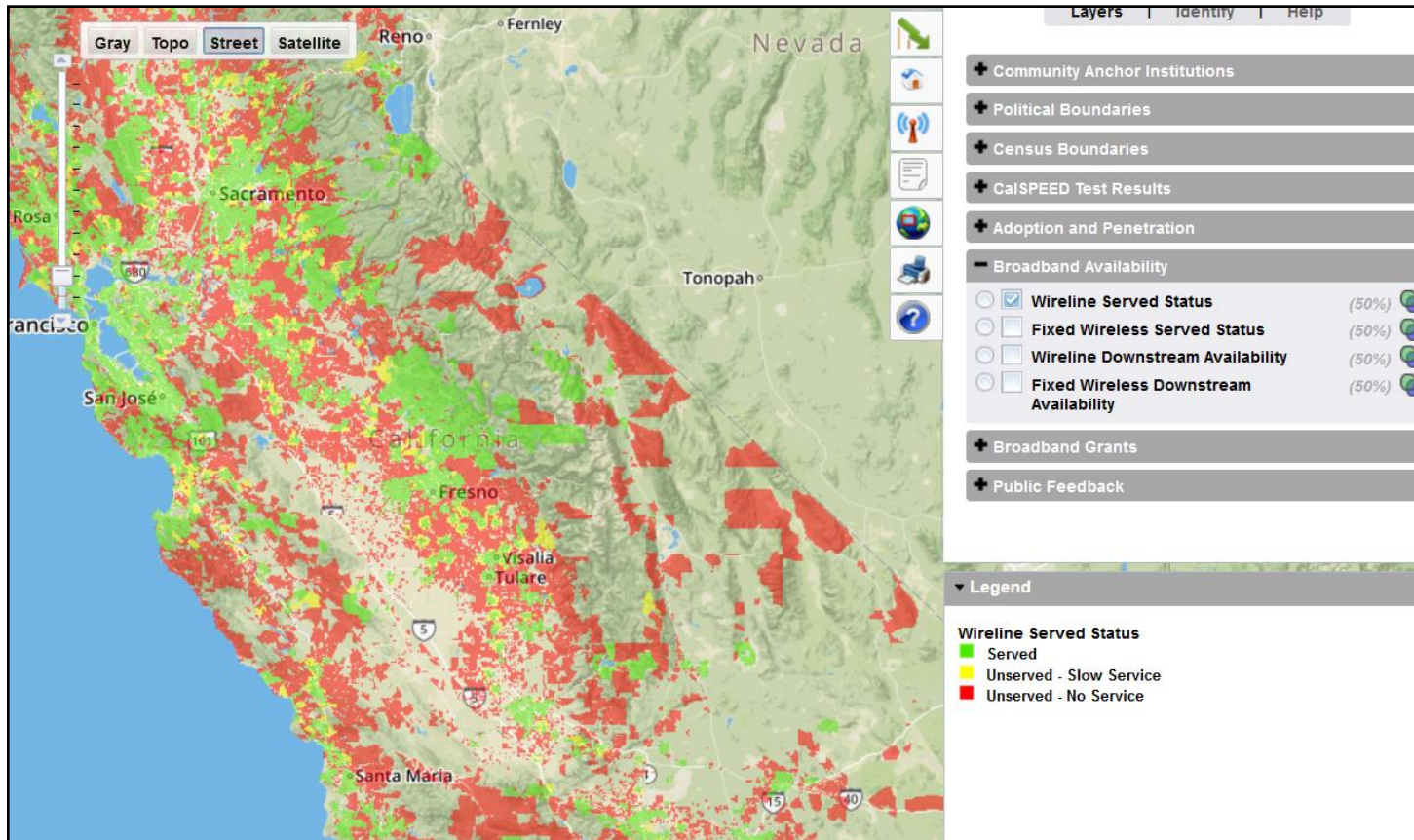
1. CalSPEED.org for Windows and macOS
2. CalSPEED mobile app  
3. Interactive Broadband Map
  - Street Address Lookup 
4. Send a hardcopy form in the mail
5. Email the FCC [broadbandfail@fcc.gov](mailto:broadbandfail@fcc.gov)







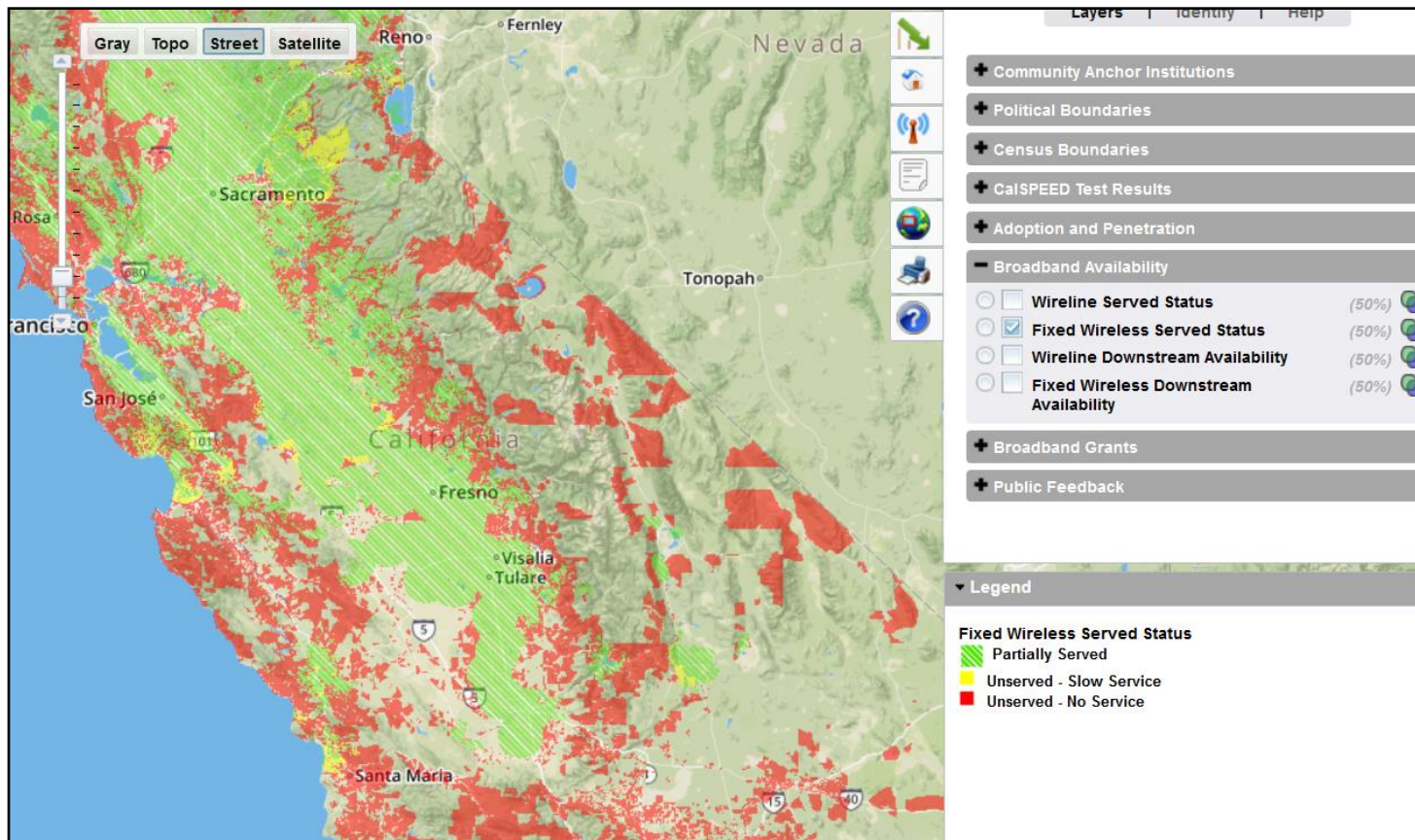
# Wireline Broadband Service





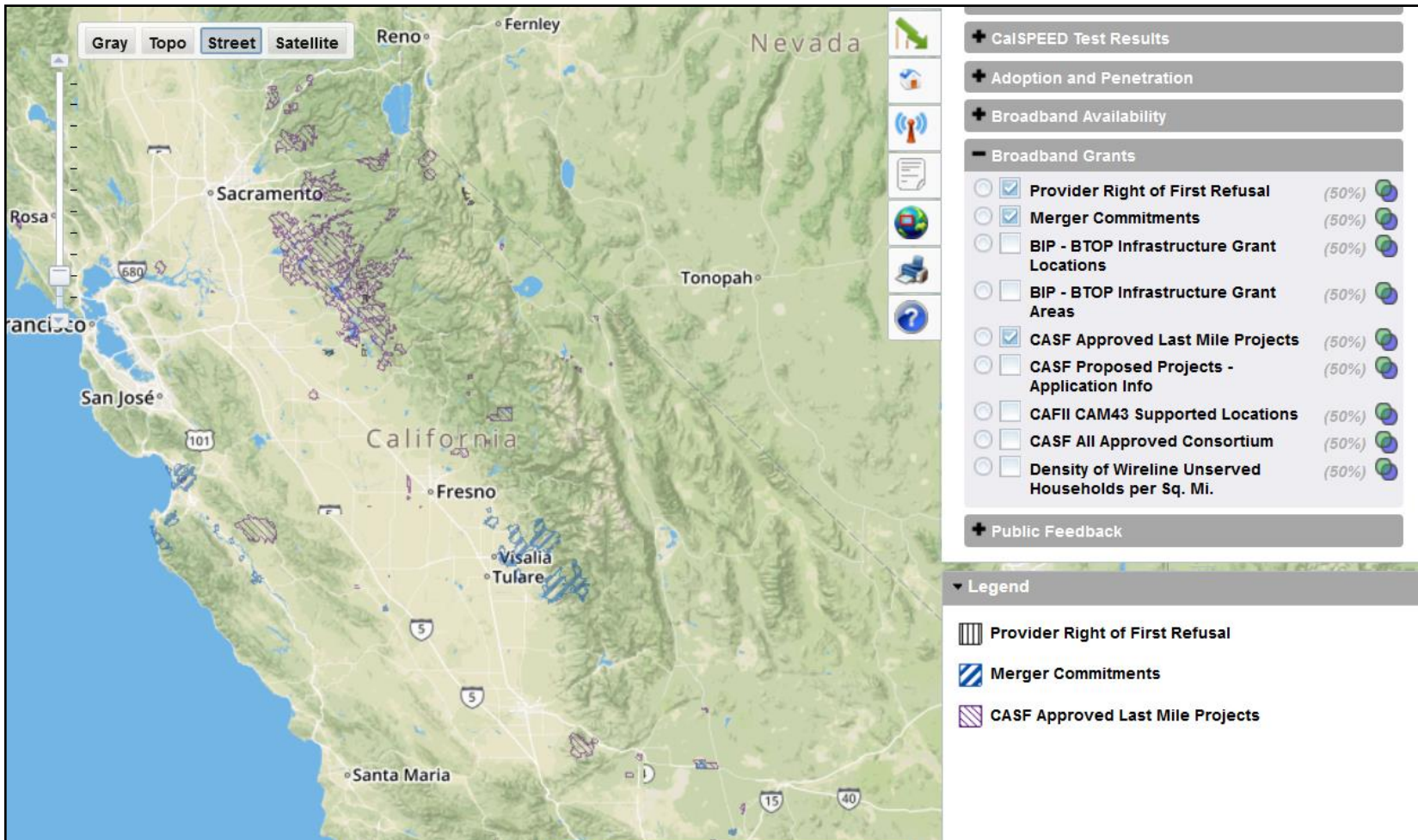


# Fixed Wireless Service





# Planned Builds







# Planned Builds II

**Map Layers:**

- + CalSPEED Test Results
- + Adoption and Penetration
- + Broadband Availability
- Broadband Grants
  - Provider Right of First Refusal (50%)
  - Merger Commitments (50%)
  - BIP - BTOP Infrastructure Grant Locations (50%)
  - BIP - BTOP Infrastructure Grant Areas (50%)
  - CASF Approved Last Mile Projects (50%)
  - CASF Proposed Projects - Application Info (50%)
  - CAFII CAM43 Supported Locations (50%)
  - CASF All Approved Consortium (50%)
  - Density of Wireline Unserved Households per Sq. Mi. (50%)
- + Public Feedback

**Legend:**

- CAFII CAM Supported Locations

**Map Interface:** Gray, Topo, Street, Satellite. Reno, Fernley, Nevada, Sacramento, Tonopah, California, Fresno, Visalia, Tulare, Santa Maria, San Jose, San Francisco, Rosa.

**Notification:** Jones, Caleb. Phone Call Tomorrow. Friday, March 09, 2018 1:15 PM-2:00 PM (UTC-08:00) Pacific. Room 330A.







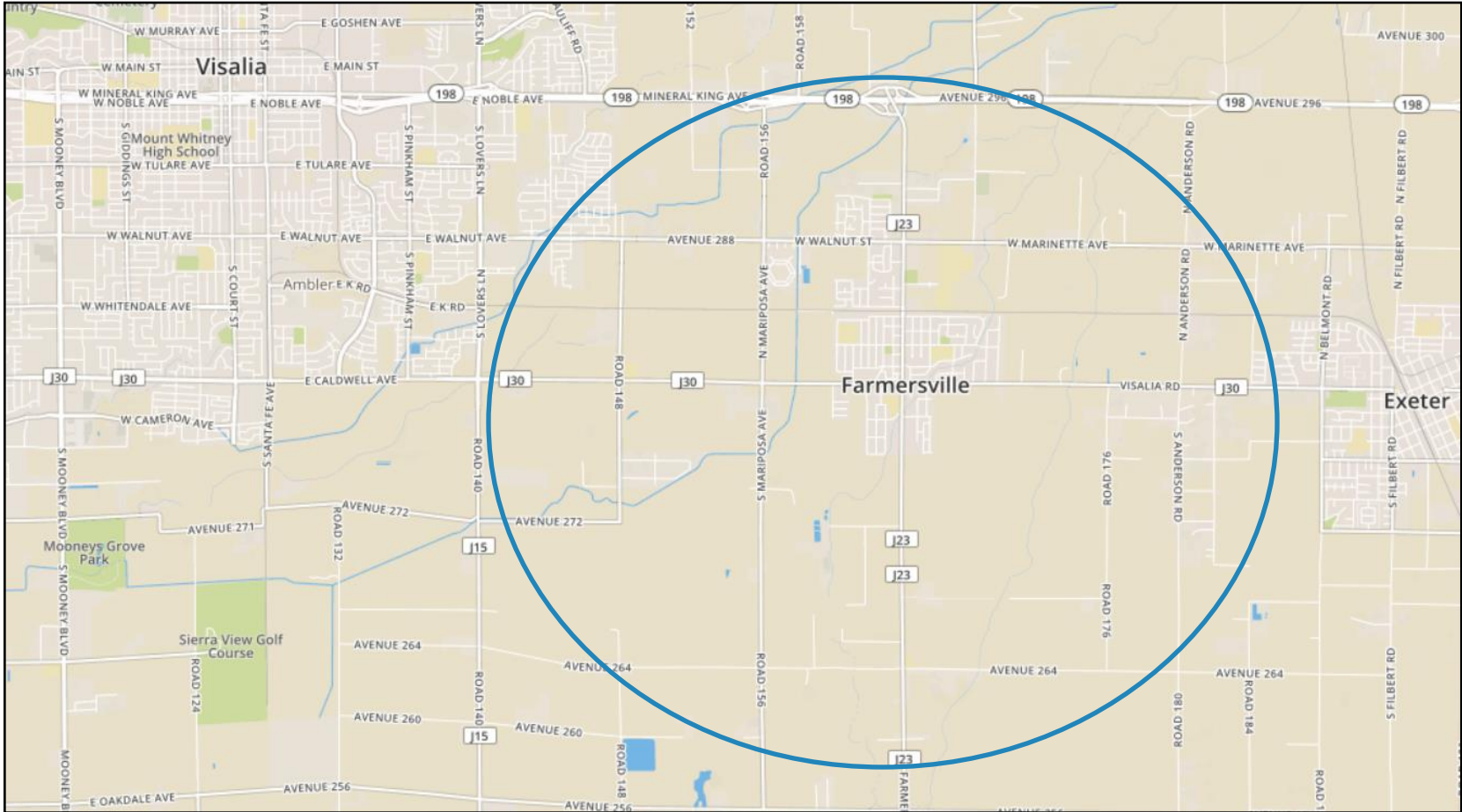
# 3 Regional Case Studies

- Farmersville
- Raisin City-Easton-Malaga
- El Portal



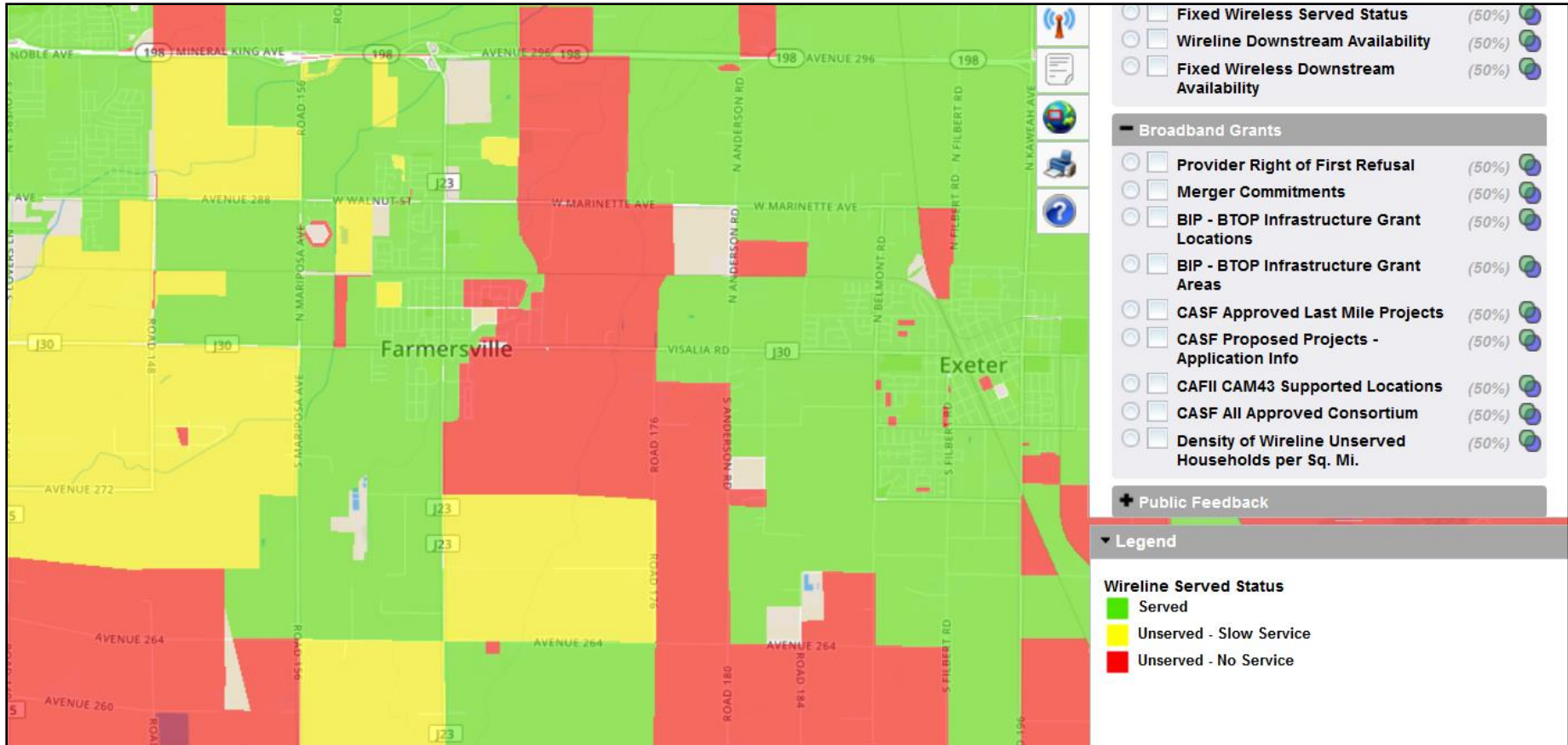


# Case Study 1: Farmersville





# Farmersville Wireline Service







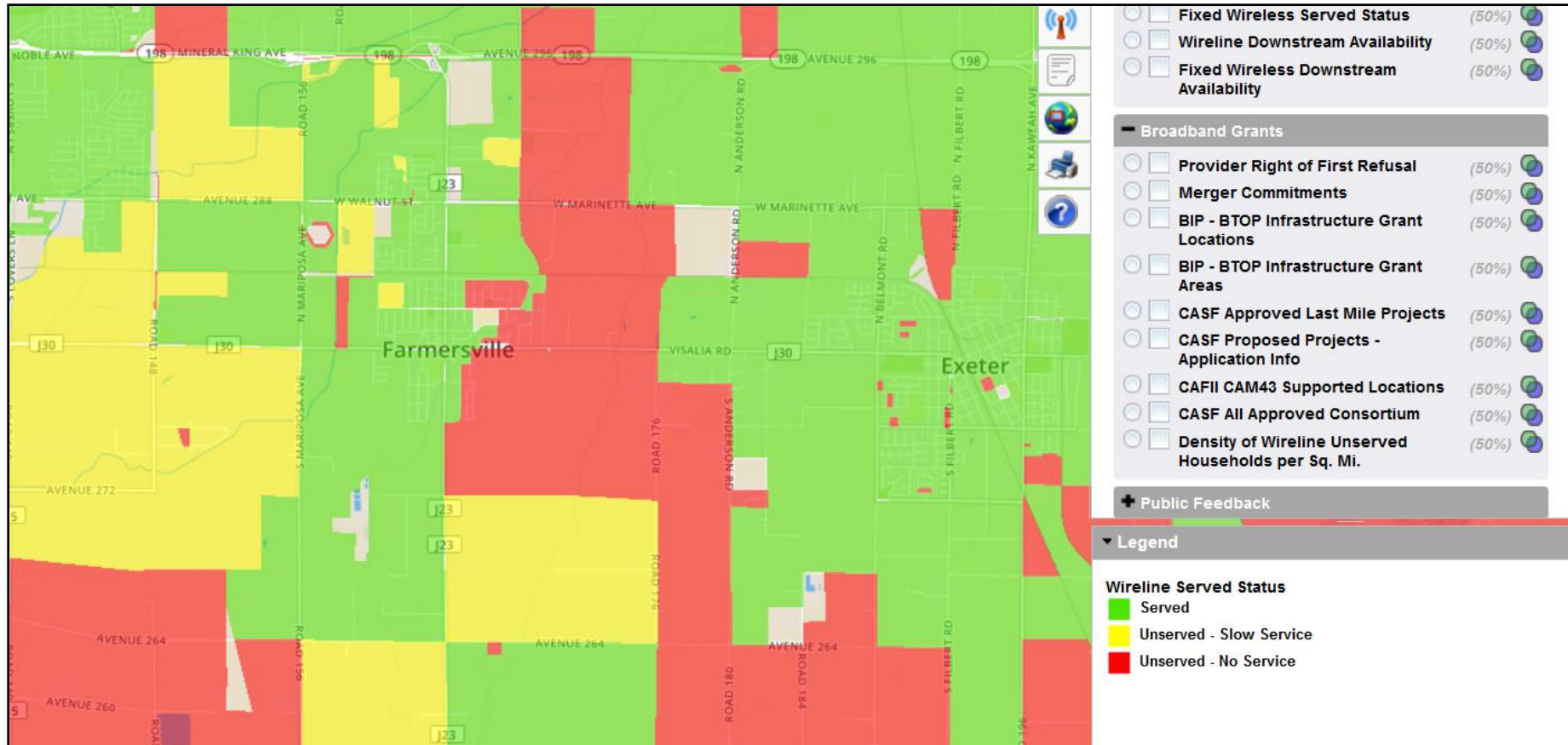
# Served Status

- Served is 6/1 or faster (Mbps)
- Unserved – Slow Service
  - Slower than 6/1
  - Faster than 768/200 Kbps
- Unserved – No Service
  - Slower than 768/200, dial-up only





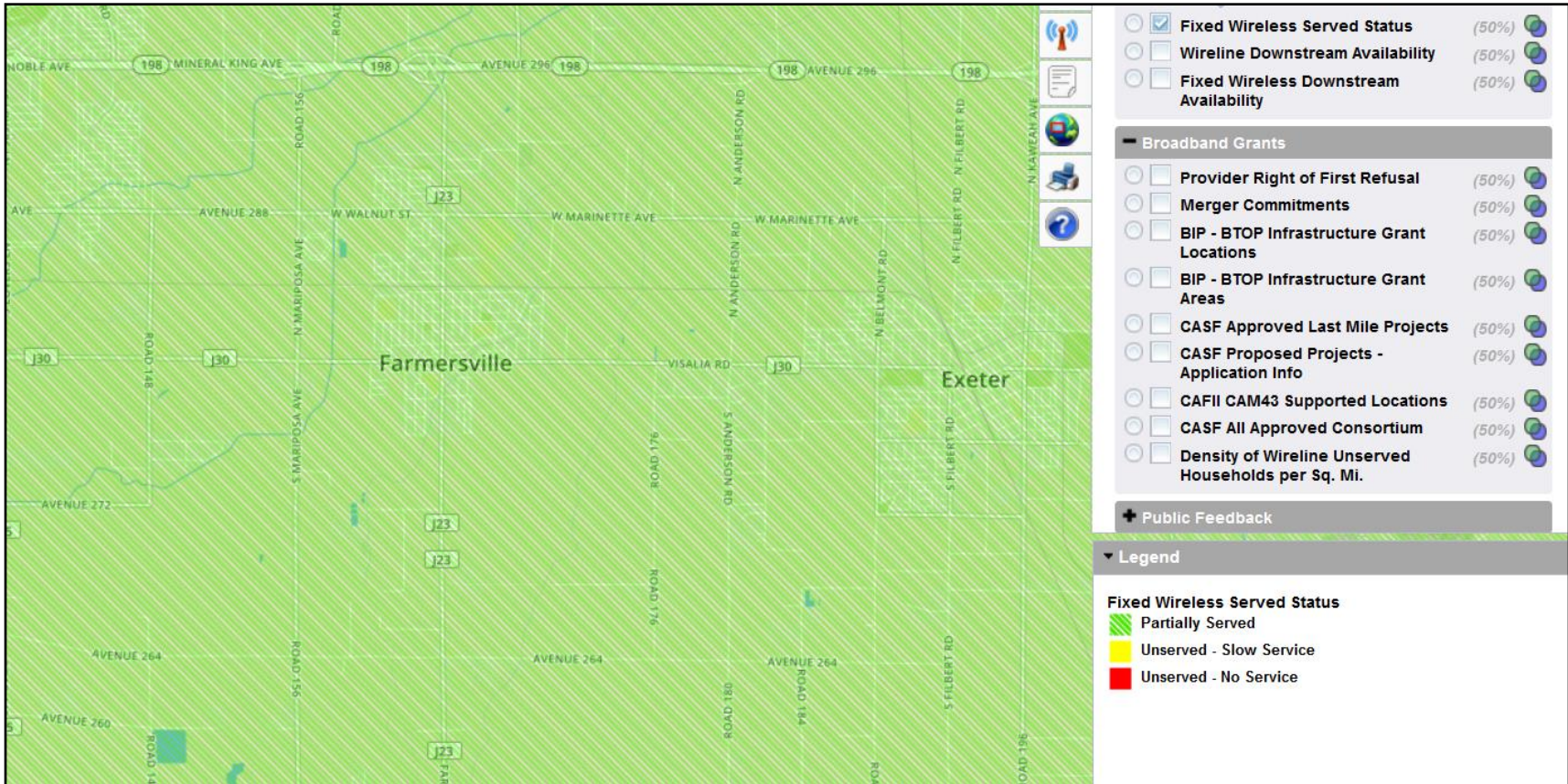
# Farmersville Wireline Service







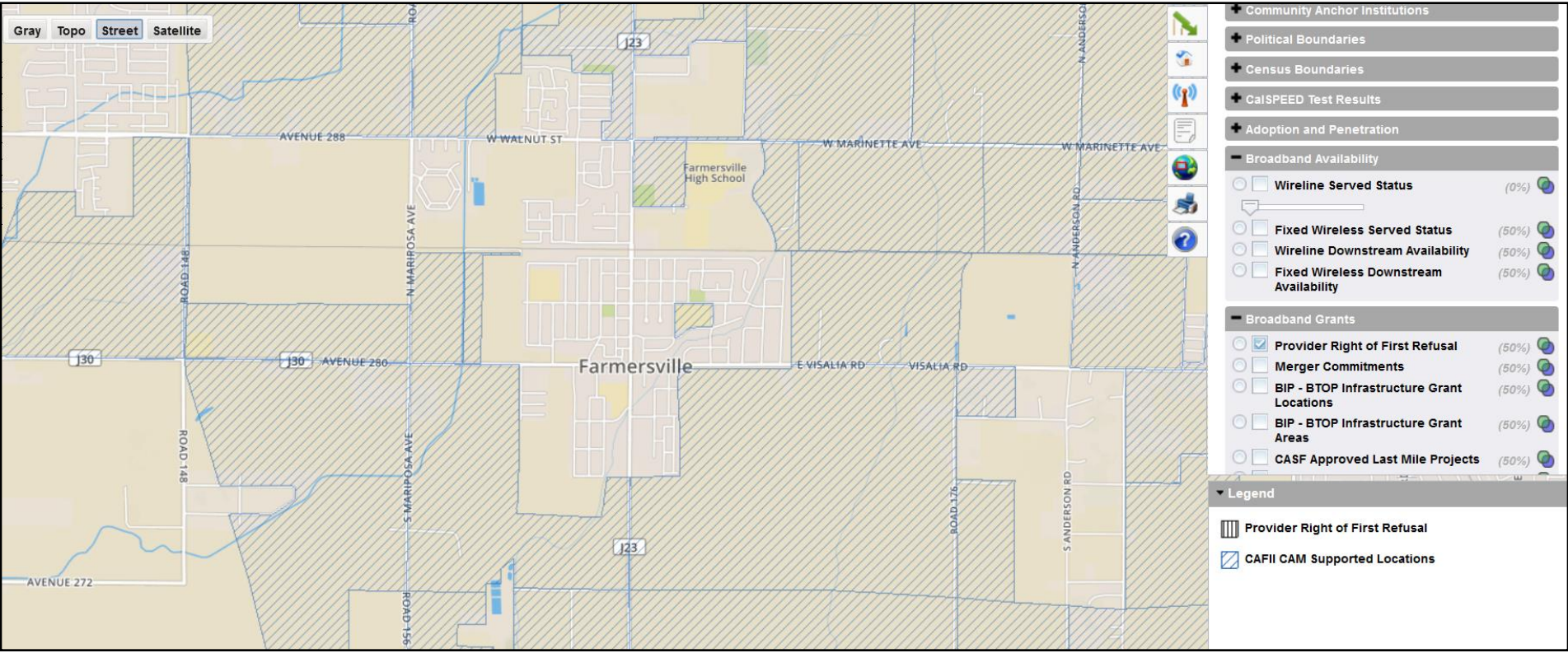
# Farmersville Fixed Wireless Service





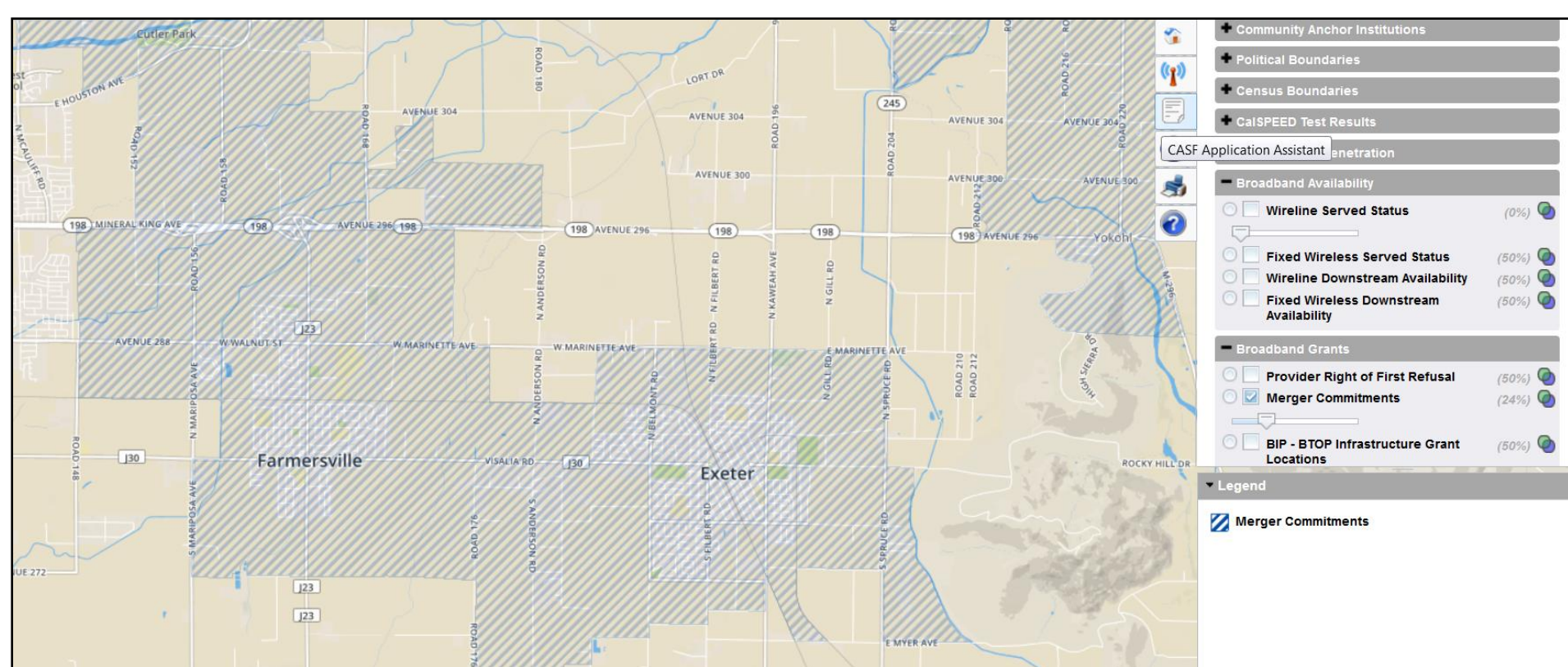


# Farmersville Planned Builds I





# Farmersville Planned Builds II



- Community Anchor Institutions
- Political Boundaries
- Census Boundaries
- CalSPEED Test Results
- CASF Application Assistant Penetration

**Broadband Availability**

- Wireline Served Status (0%)
- Fixed Wireless Served Status (50%)
- Wireline Downstream Availability (50%)
- Fixed Wireless Downstream Availability (50%)

**Broadband Grants**

- Provider Right of First Refusal (50%)
- Merger Commitments (24%)
- BIP - BTOP Infrastructure Grant Locations (50%)

**Legend**

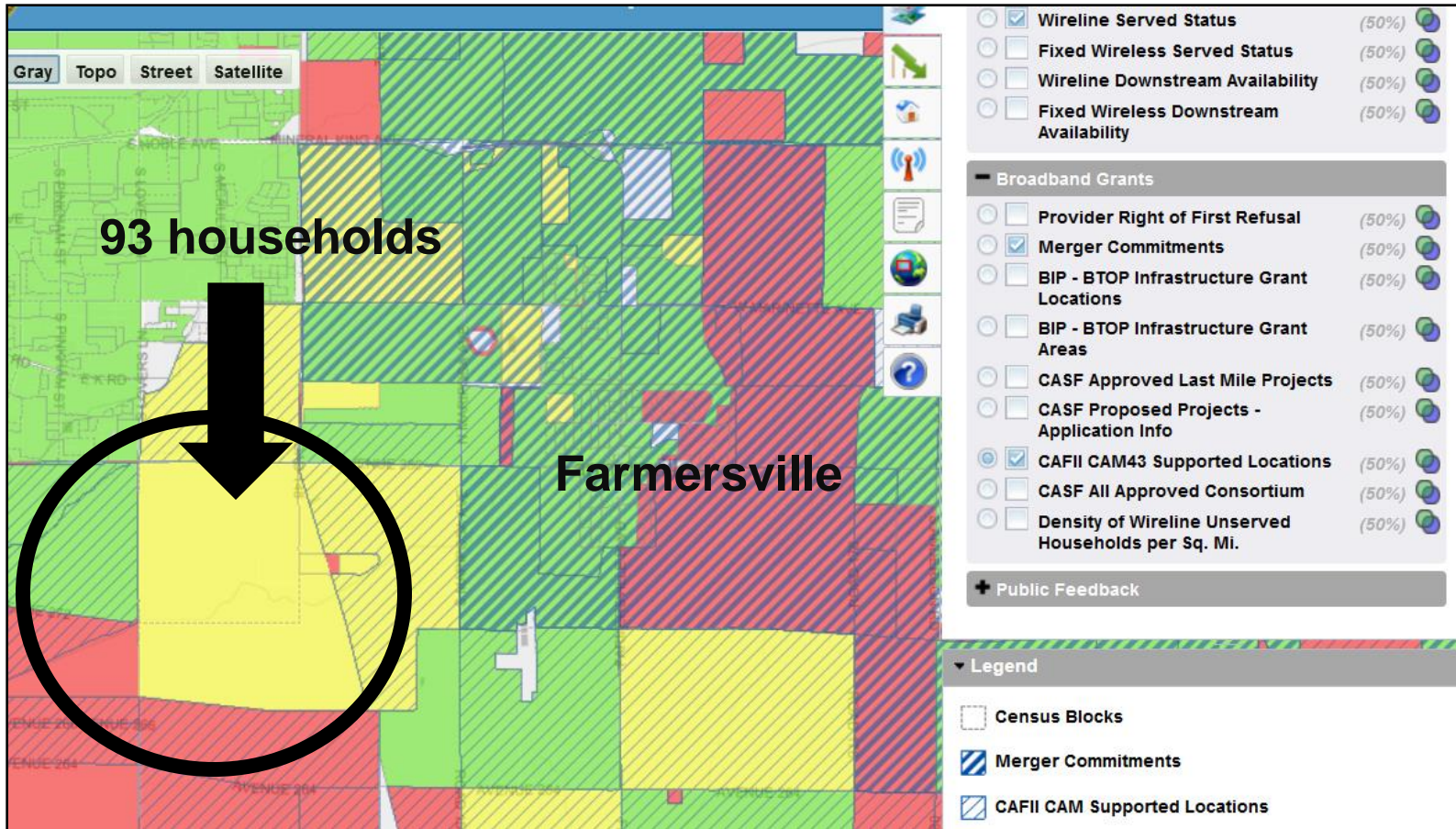
- Merger Commitments







# Farmersville Conclusion





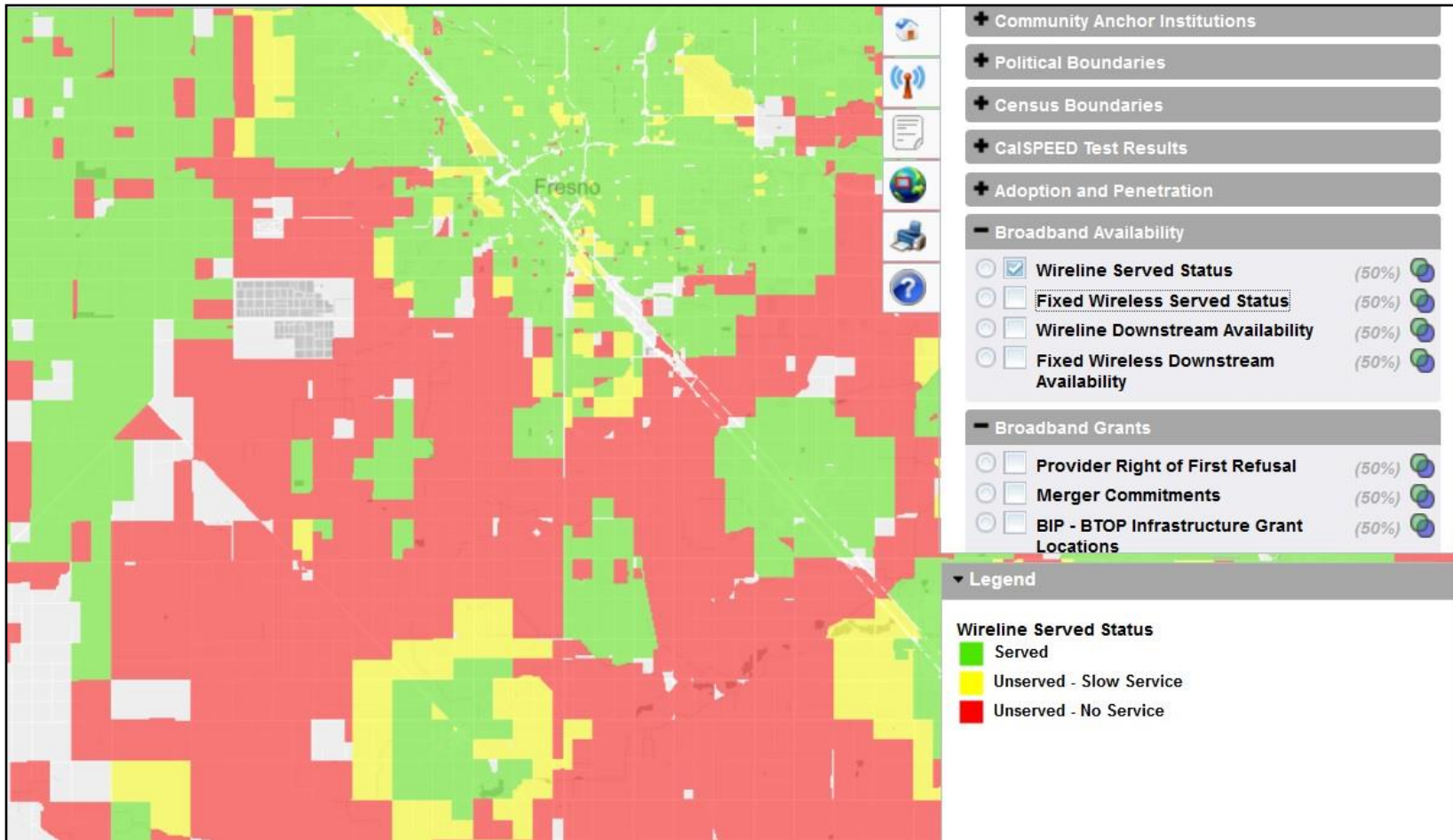


# Case Study 2: Raisin City/Easton/Malaga





# Raisin City-Malaga Wireline Service





# Served Status

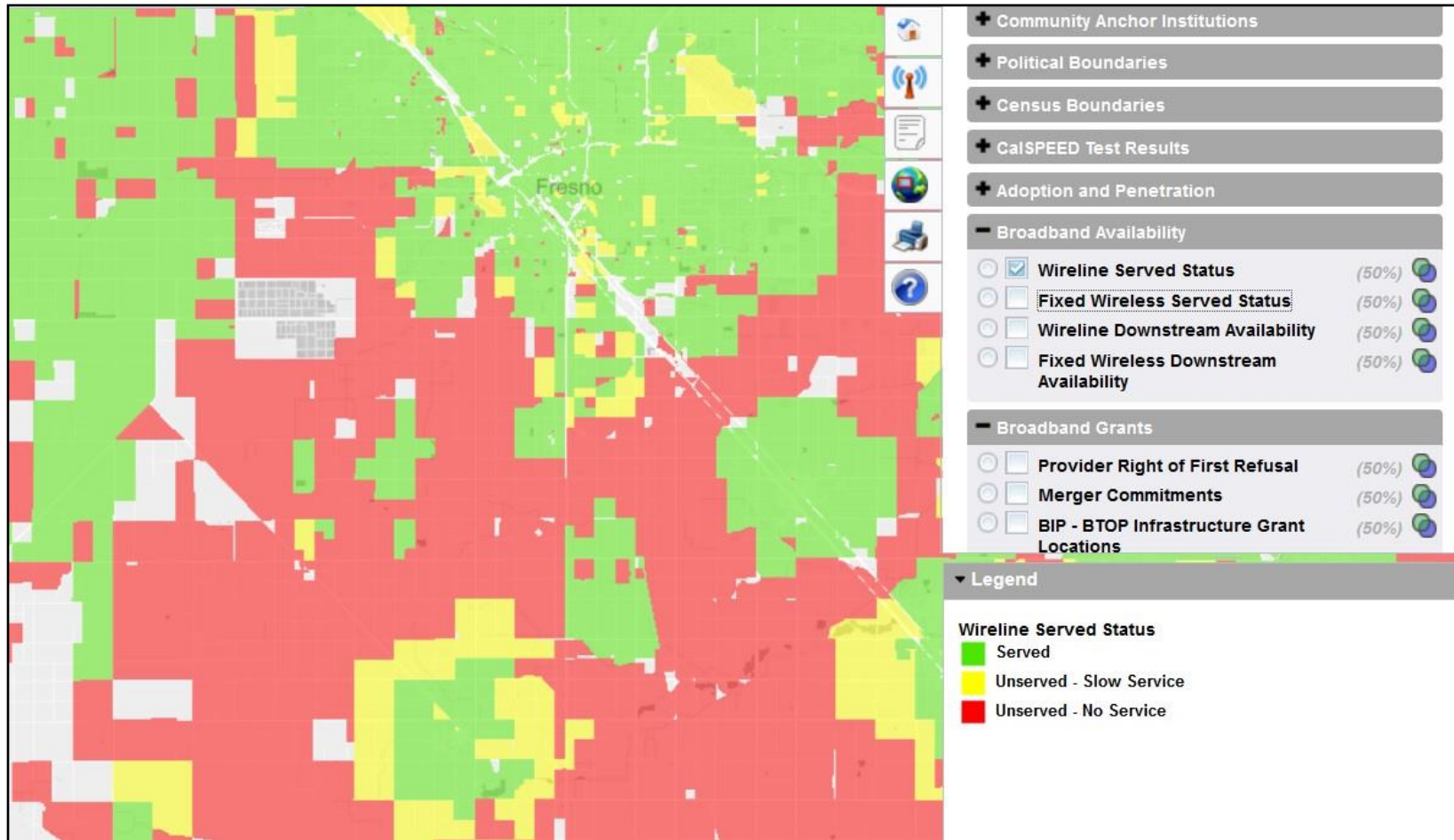
- Served is 6/1 or faster (Mbps)
- Unserved – Slow Service
  - Slower than 6/1
  - Faster than 768/200 Kbps
- Unserved – No Service
  - Slower than 768/200, dial-up only





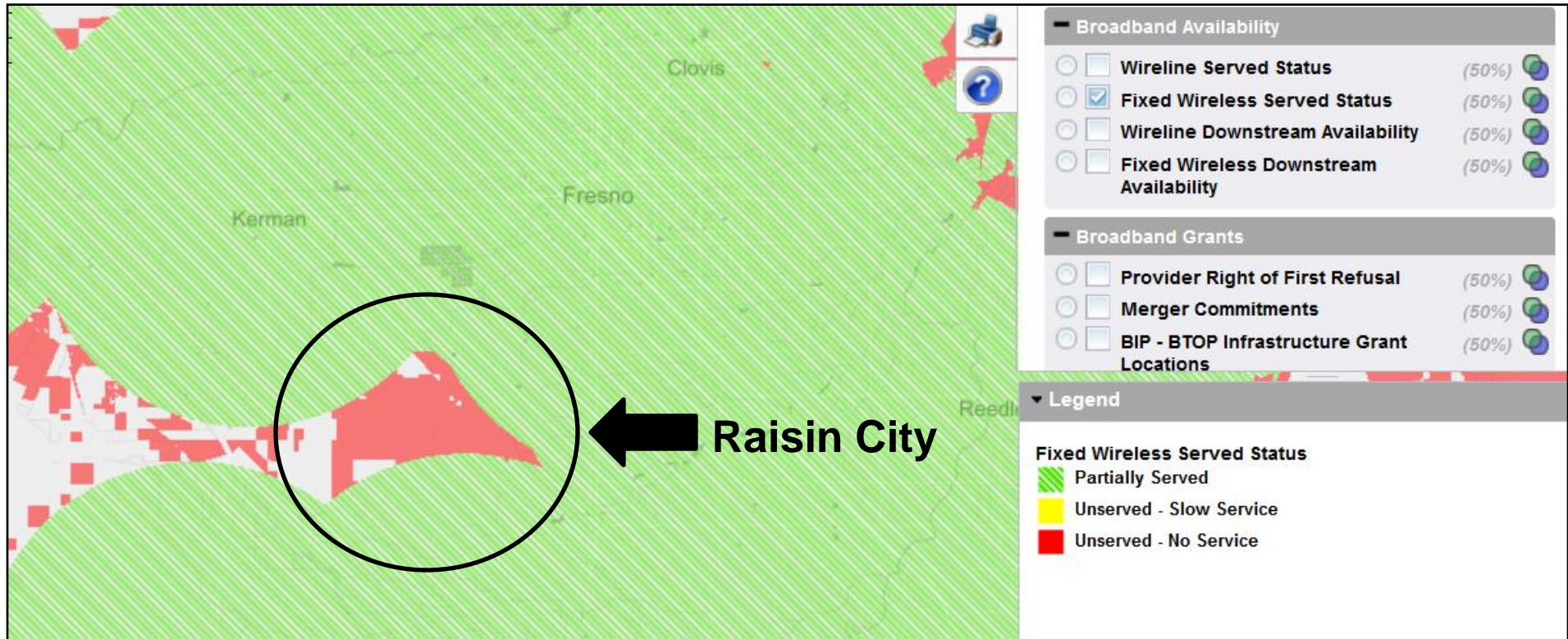


# Raisin City-Malaga Wireline Service





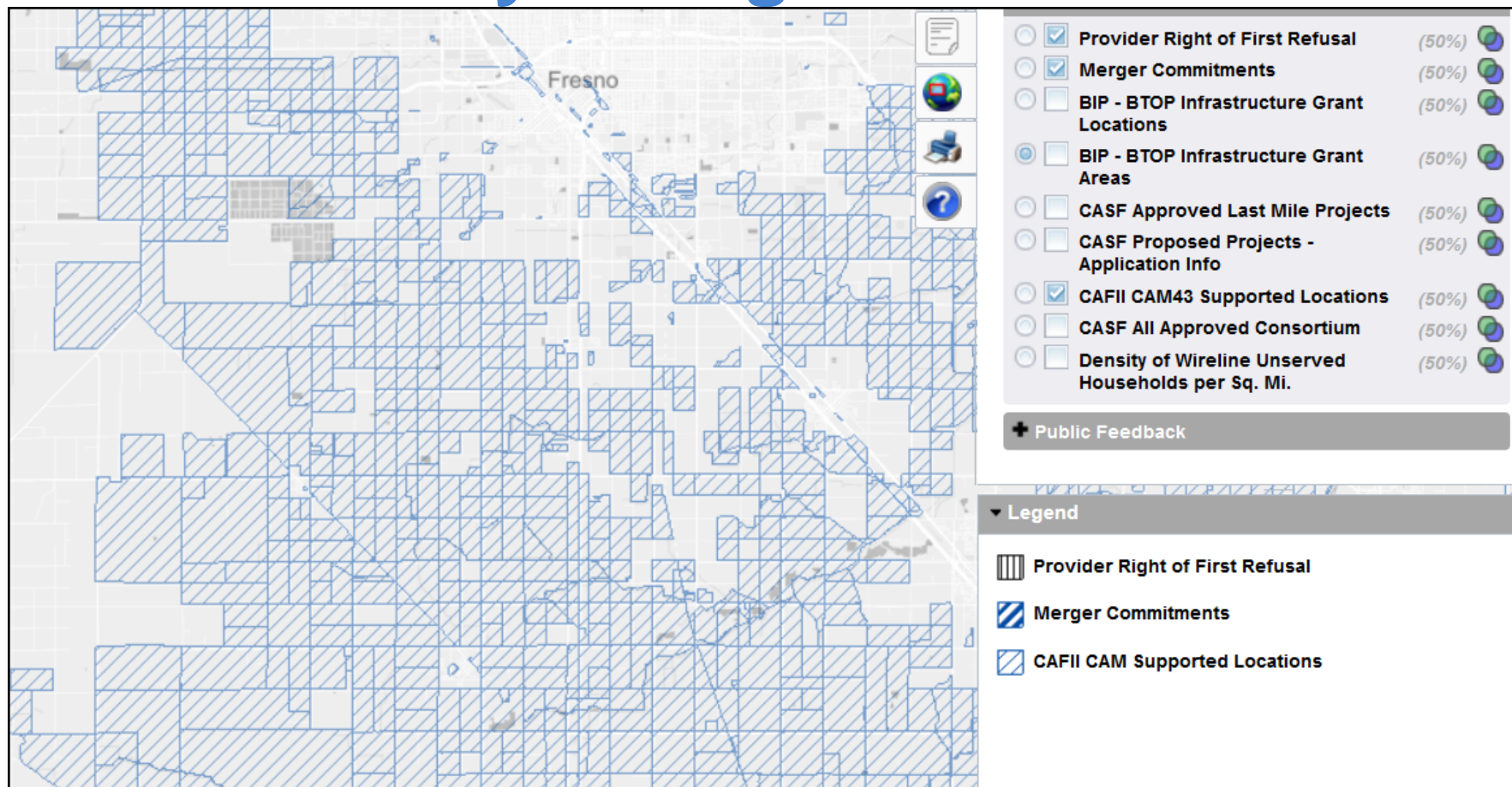
# Raisin City-Malaga Fixed Wireless Service







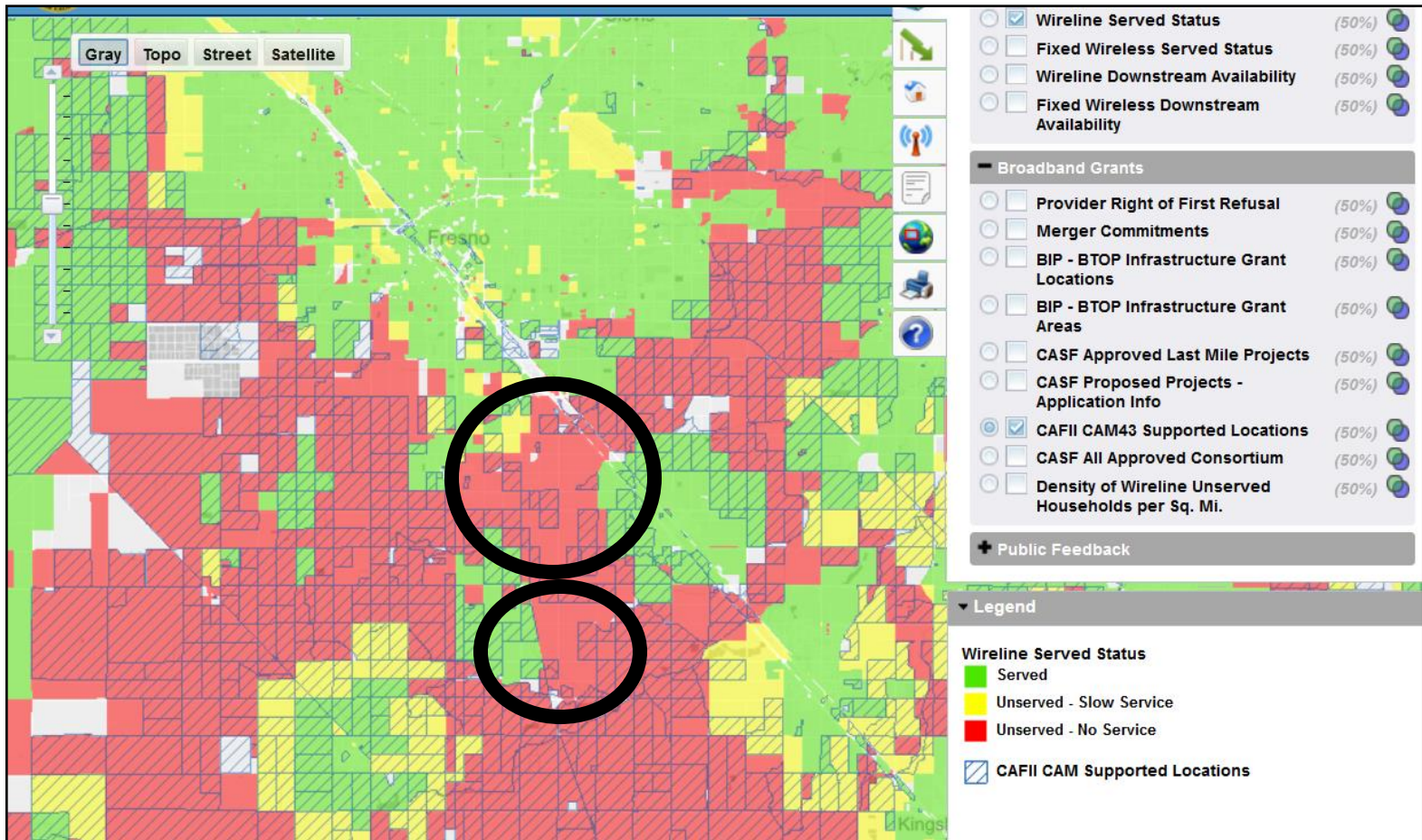
# Raisin City-Malaga Planned Builds







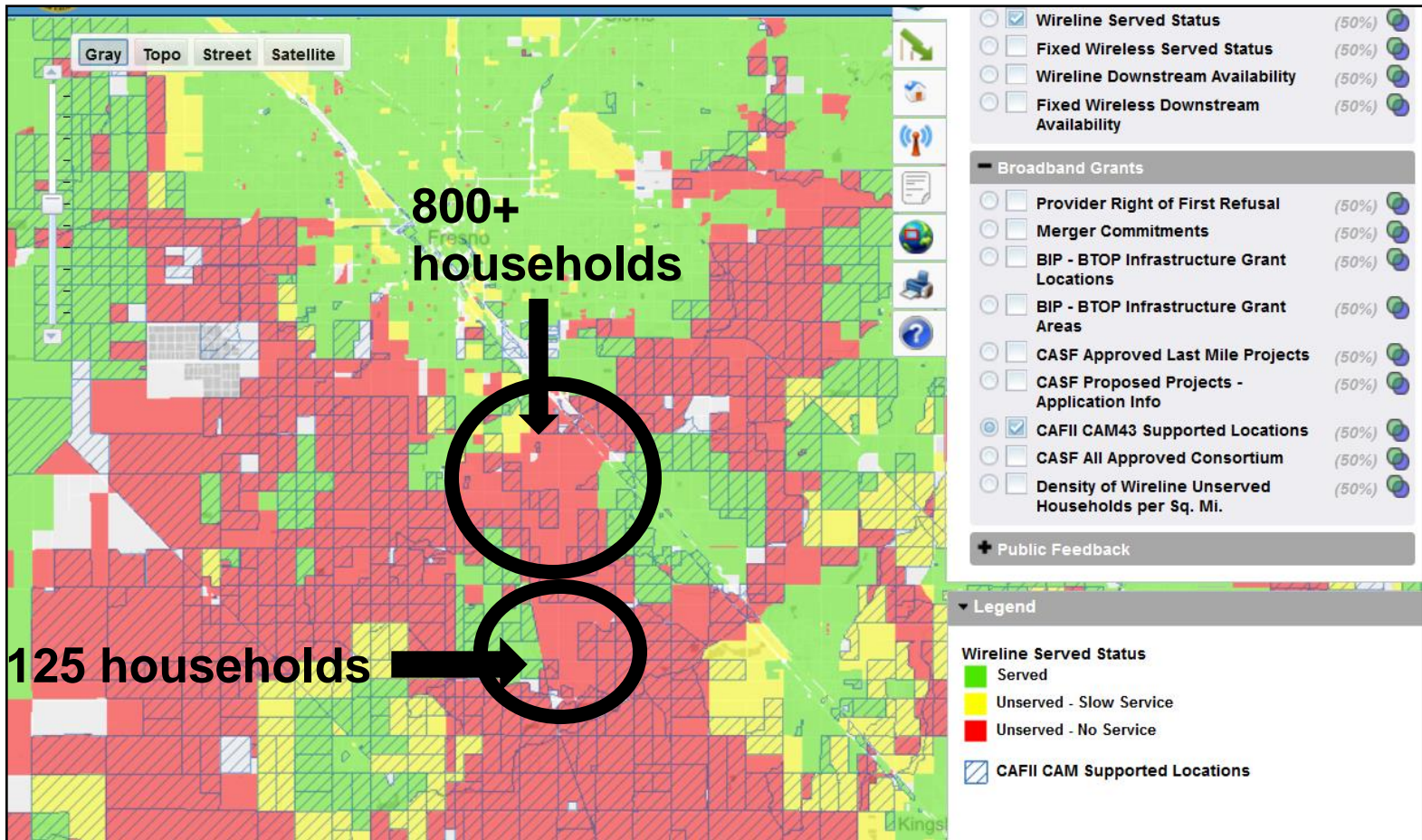
# Prospects for non-CAF Builds







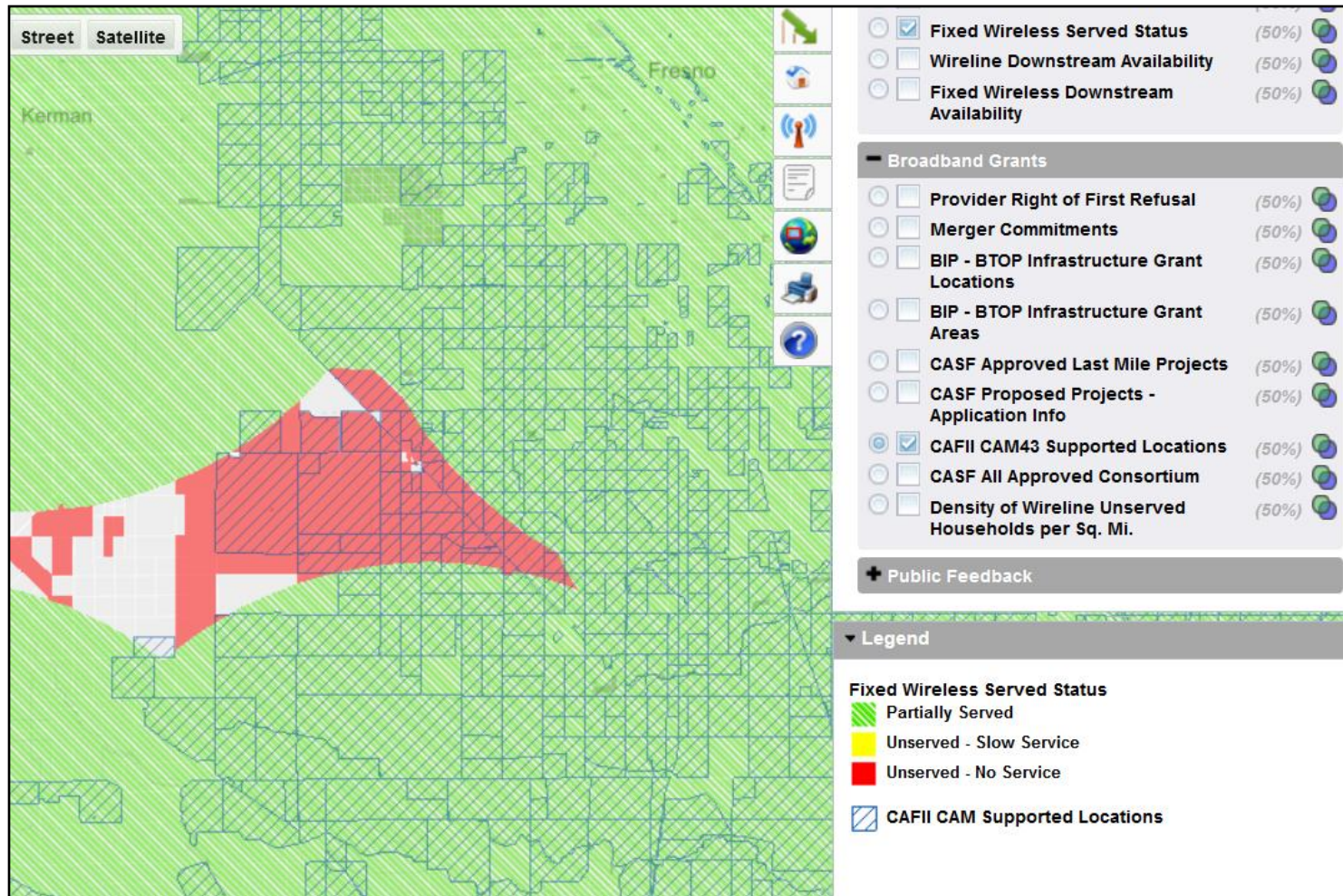
# Prospects for CASF Builds?







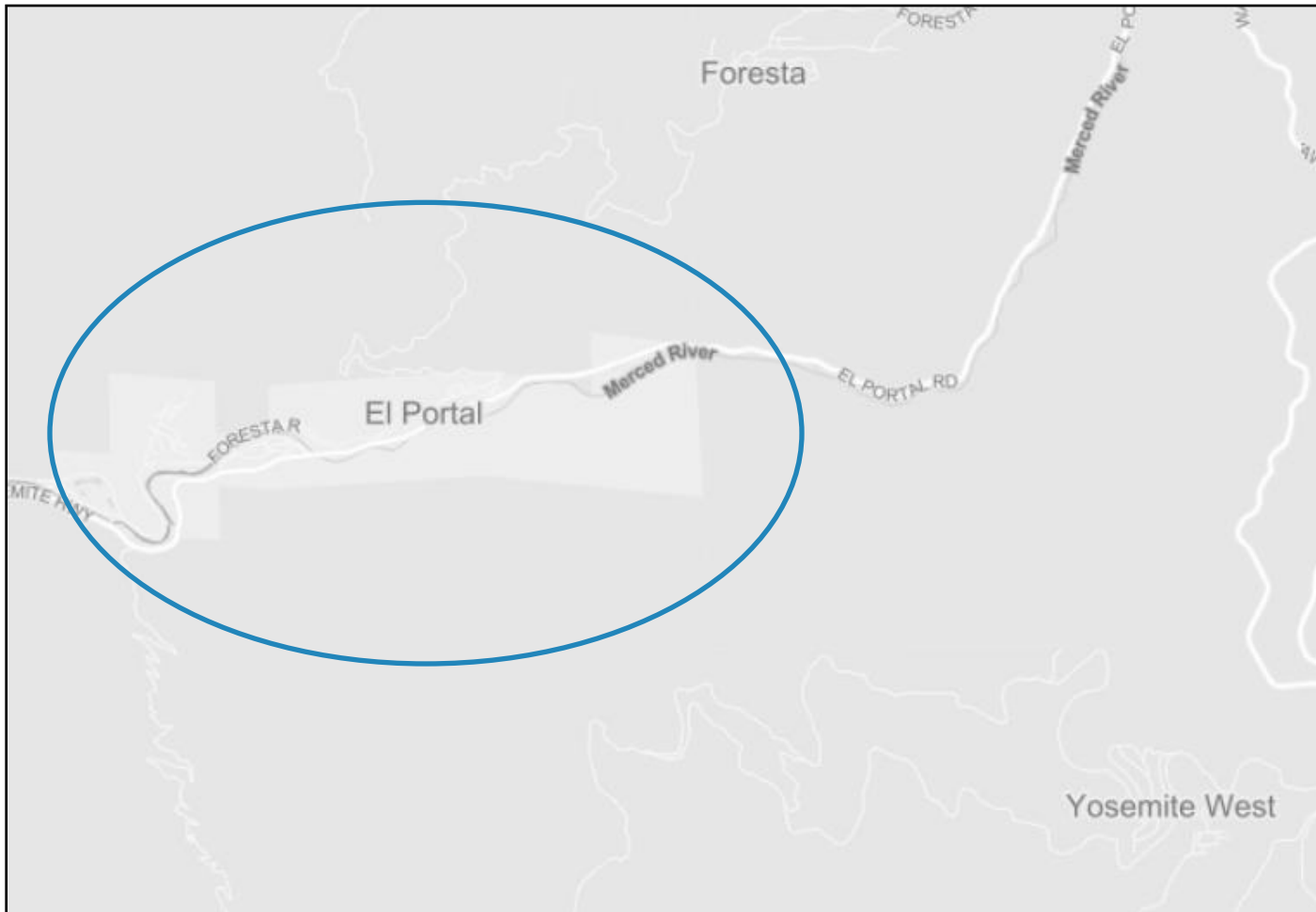
# CAF Builds in Raisin City





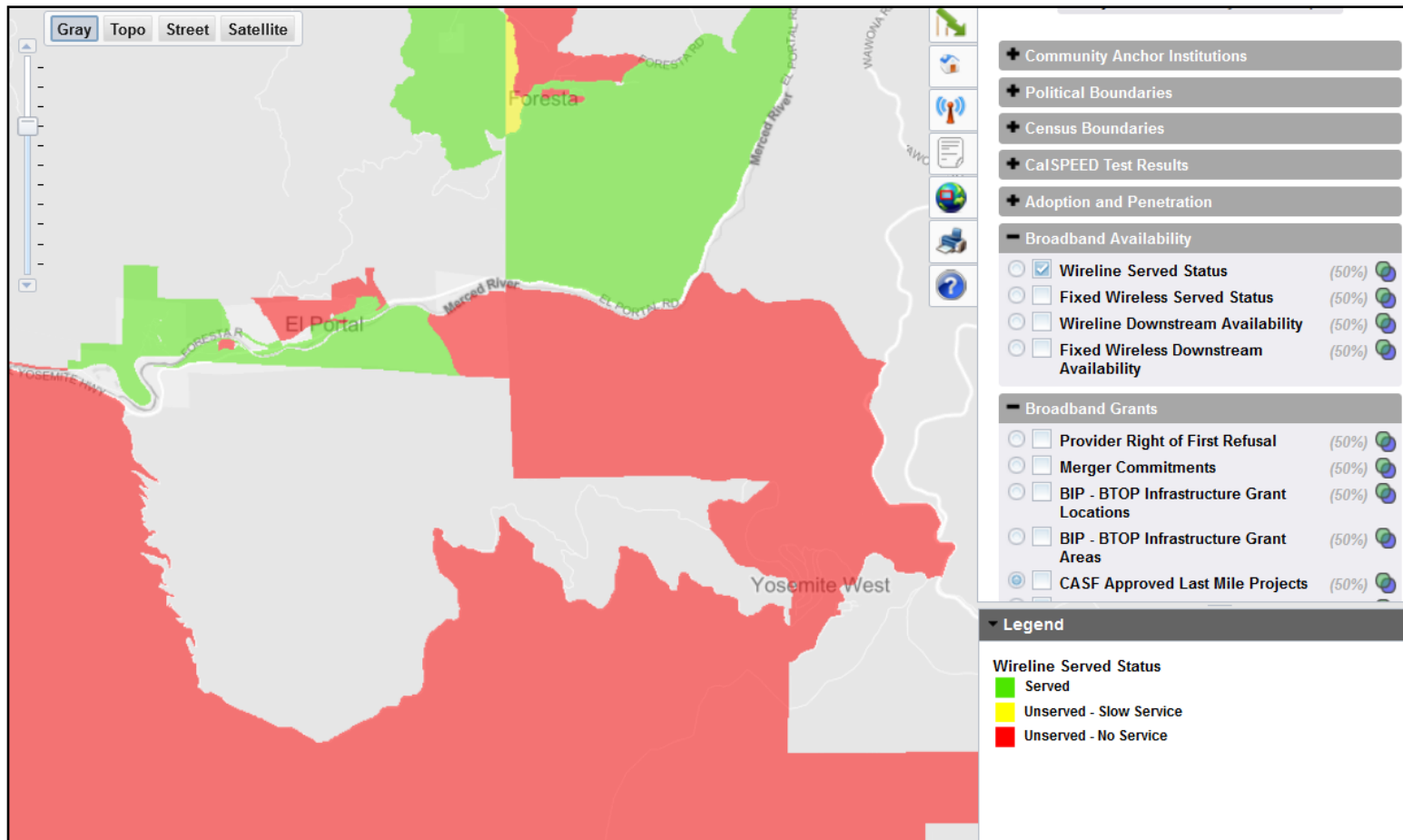


# Case Study 3: El Portal



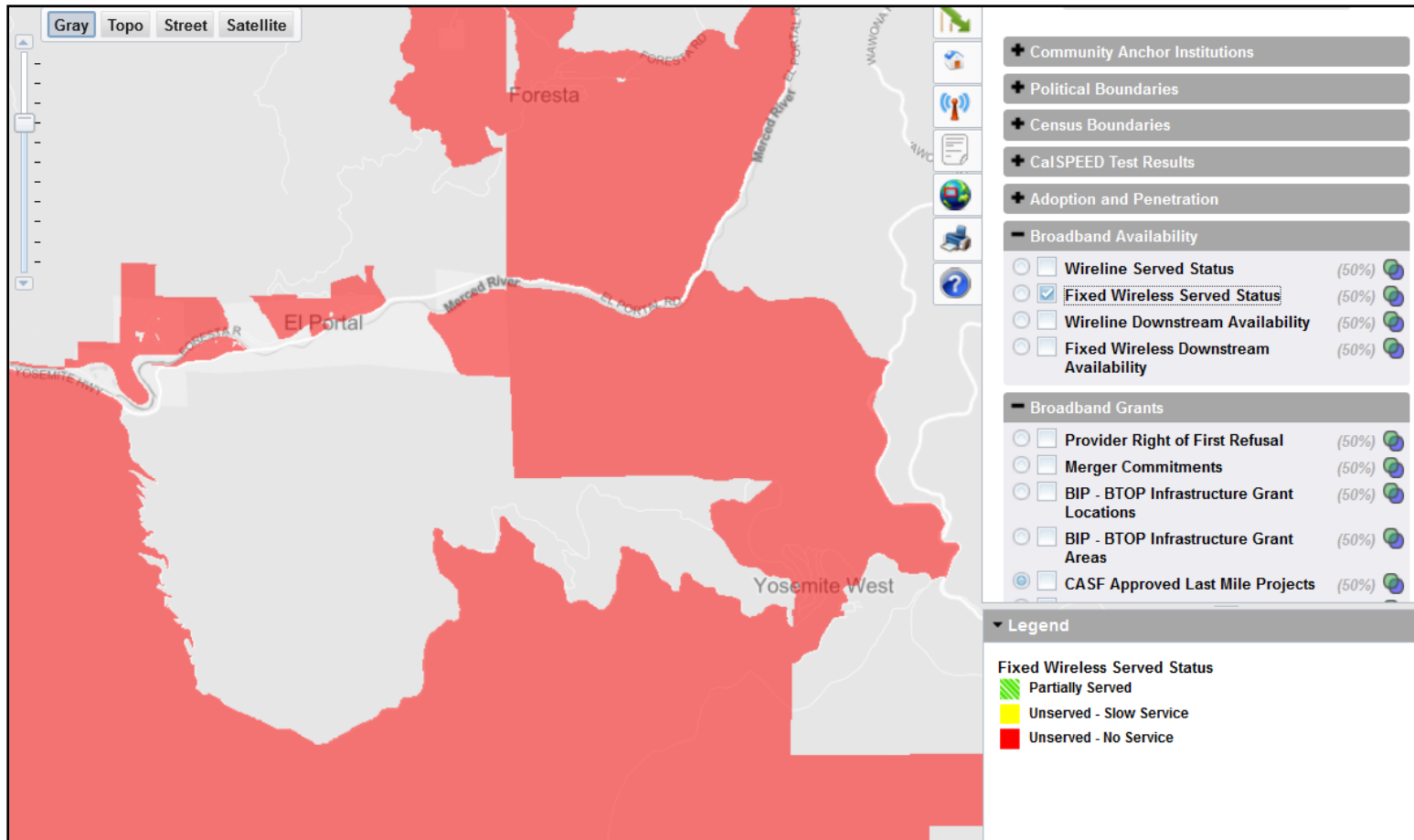


# El Portal Wireline Service





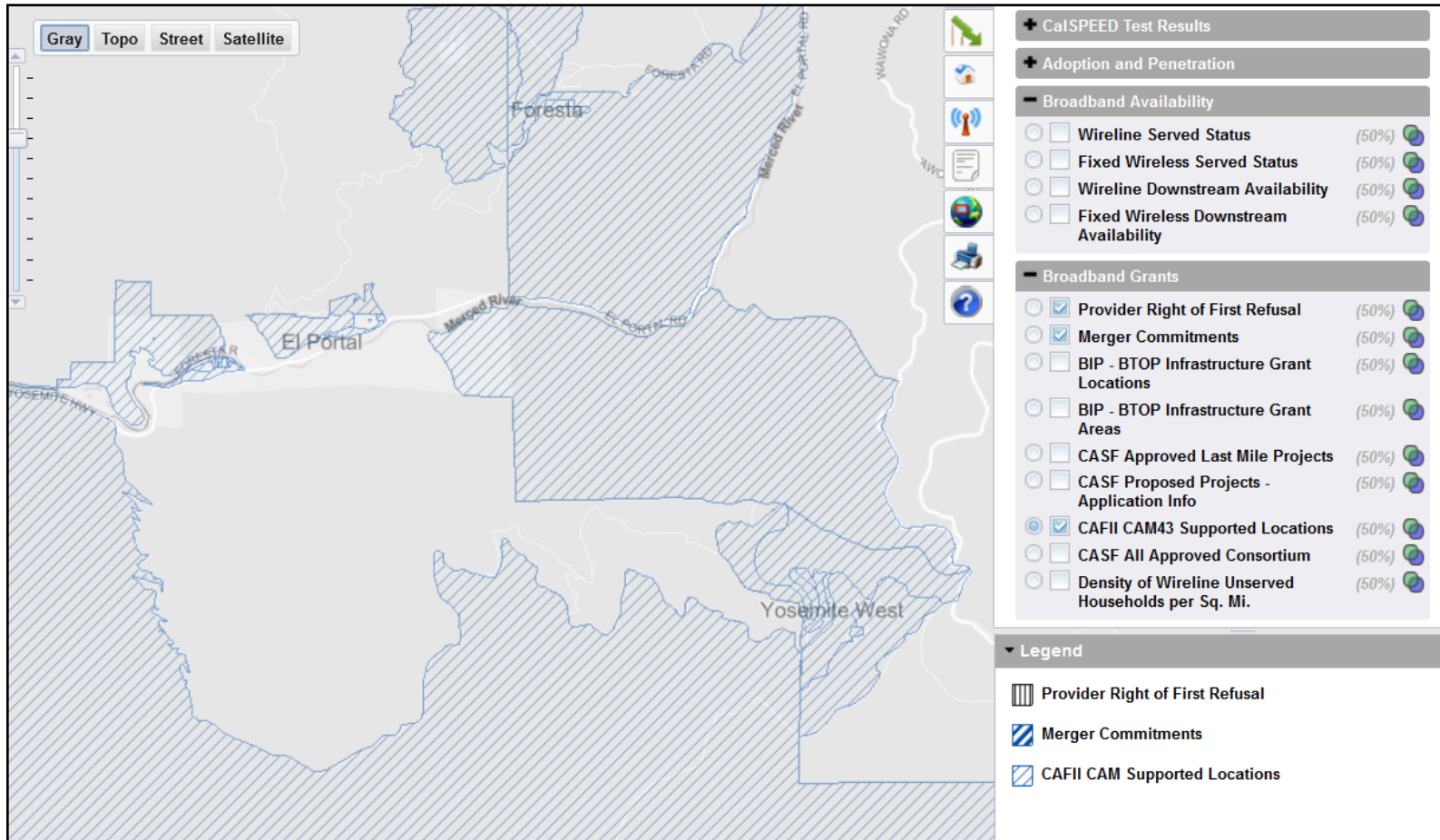
# El Portal Fixed Wireless Service







# El Portal Planned Builds





# El Portal Summary

- 104 unserved households
- 93 households located in CAF blocks

