



3 CASF Case Studies

Oroville Public Forum

Robert Osborn

Broadband, Video & Market Branch

March 14, 2018

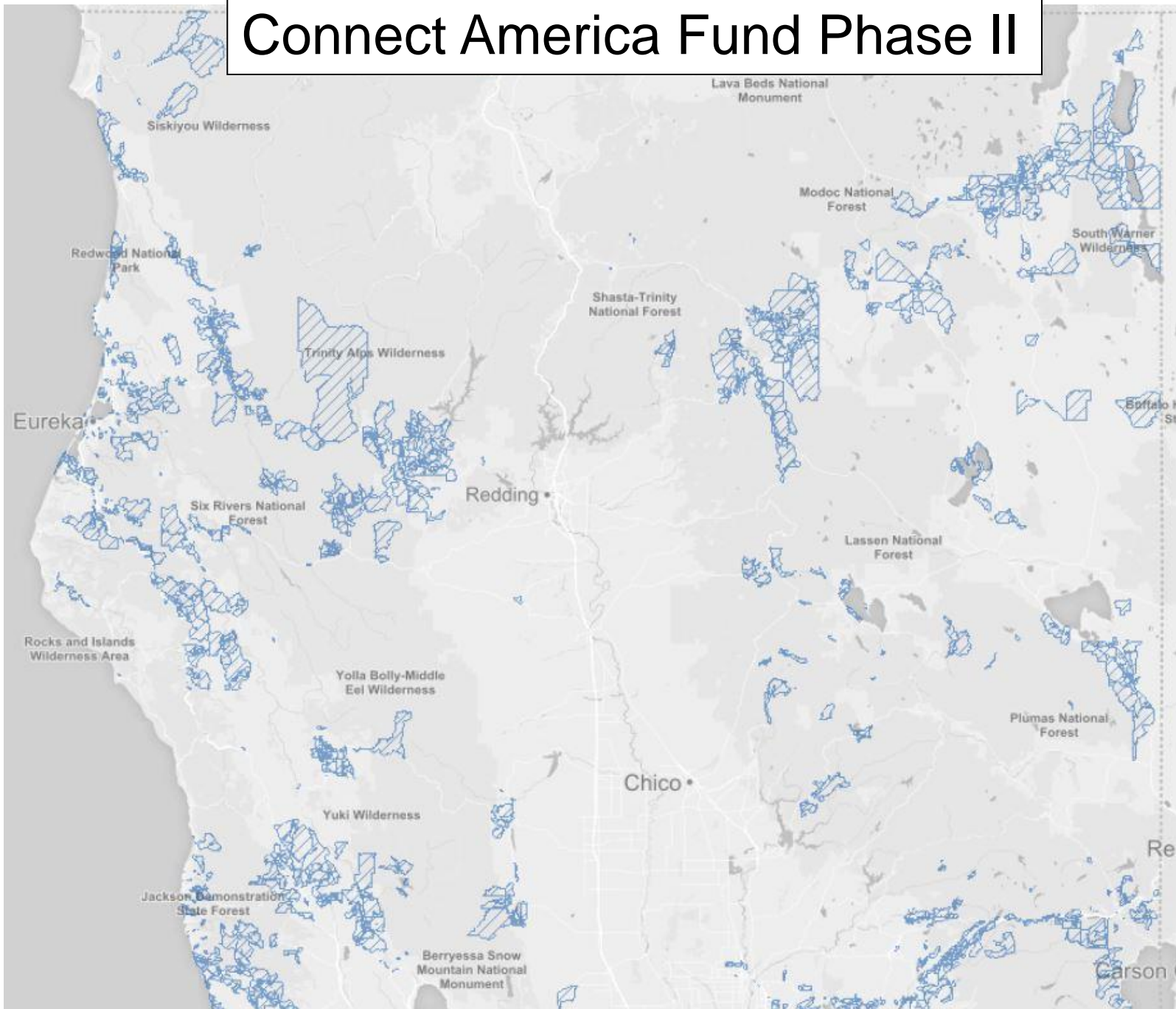




Regional View



Connect America Fund Phase II





Several Community Examples

- South Oroville / Palermo
- Orland / Corning
- Forest Ranch / Sterling City



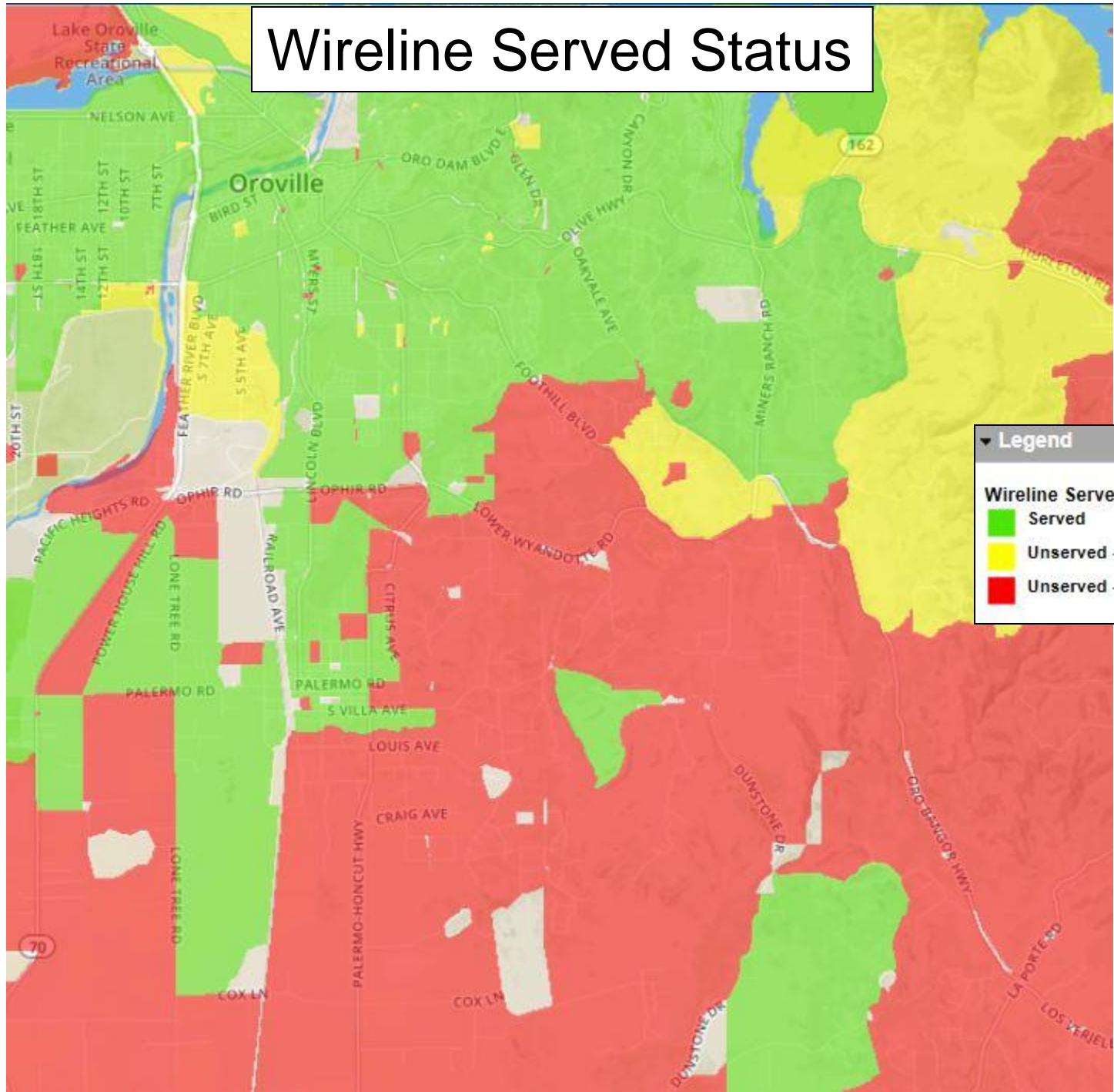


Grant Application Eligibility Filters (first pass)

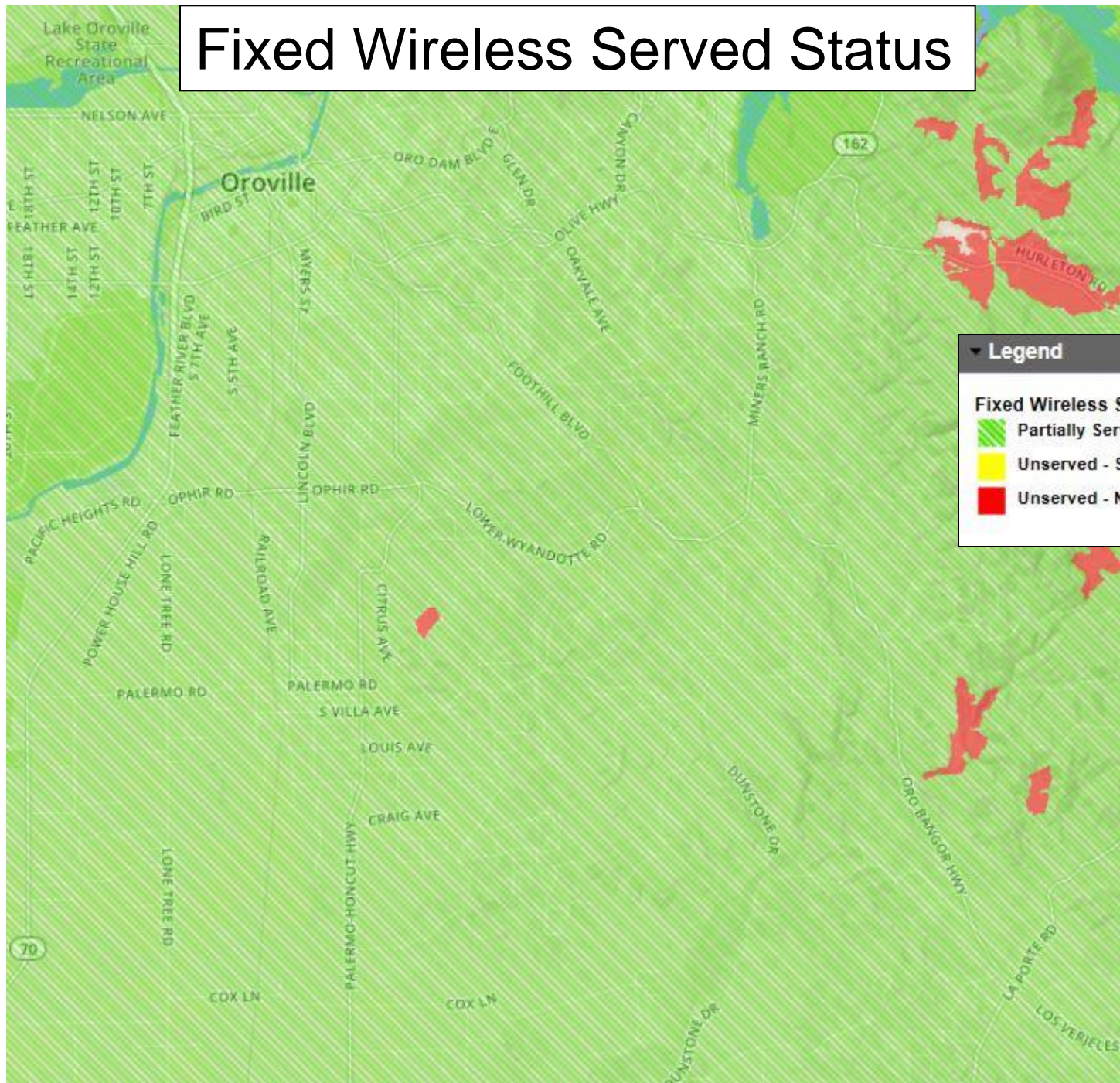
- Previous CASF grant award
- Served status (6 mbps down and 1 up)
 - Wireline, fixed wireless, mobile
- Connect America Fund Phase II
- Provider right of first refusal (as of Jan '18)
- Merger commitments



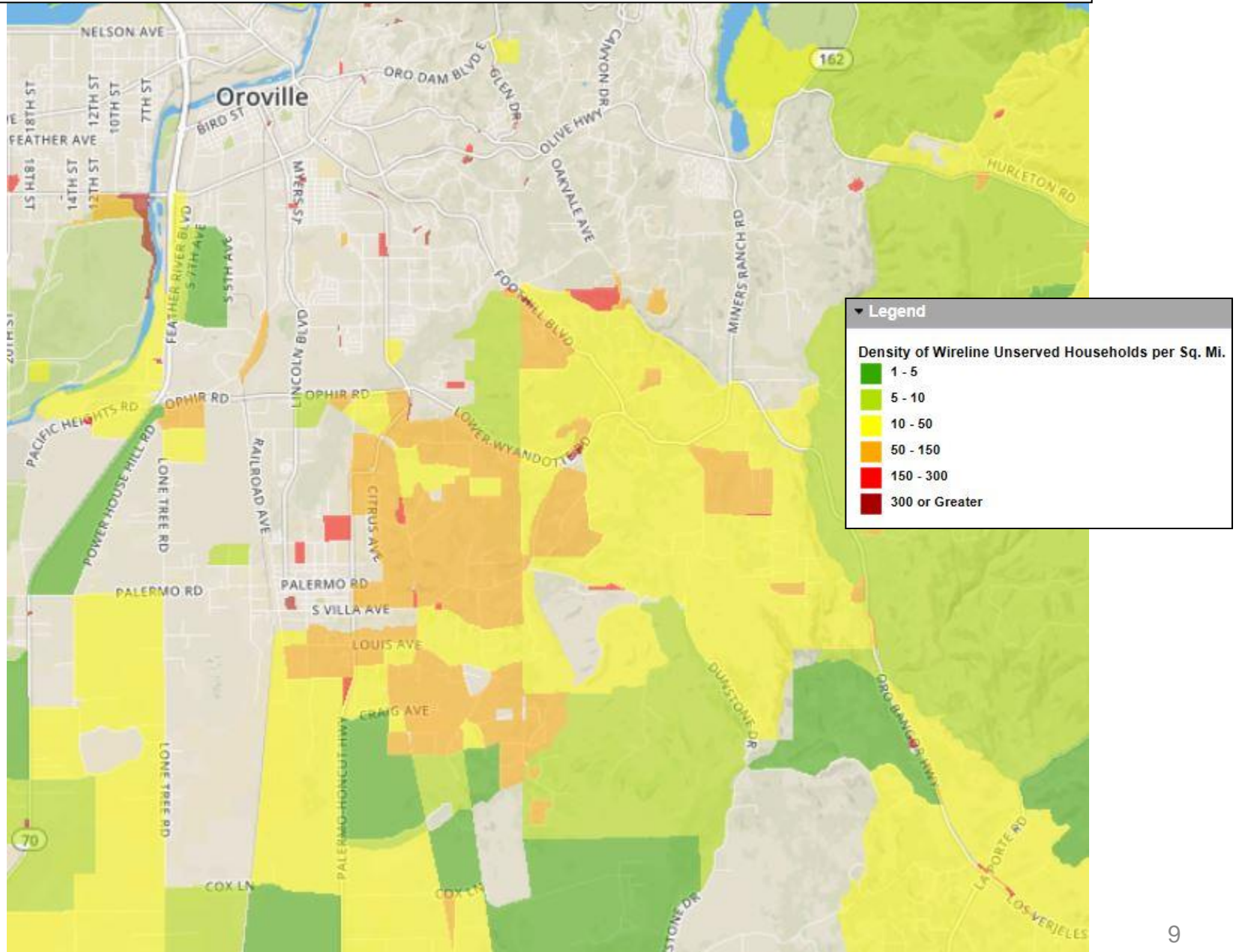
Wireline Served Status



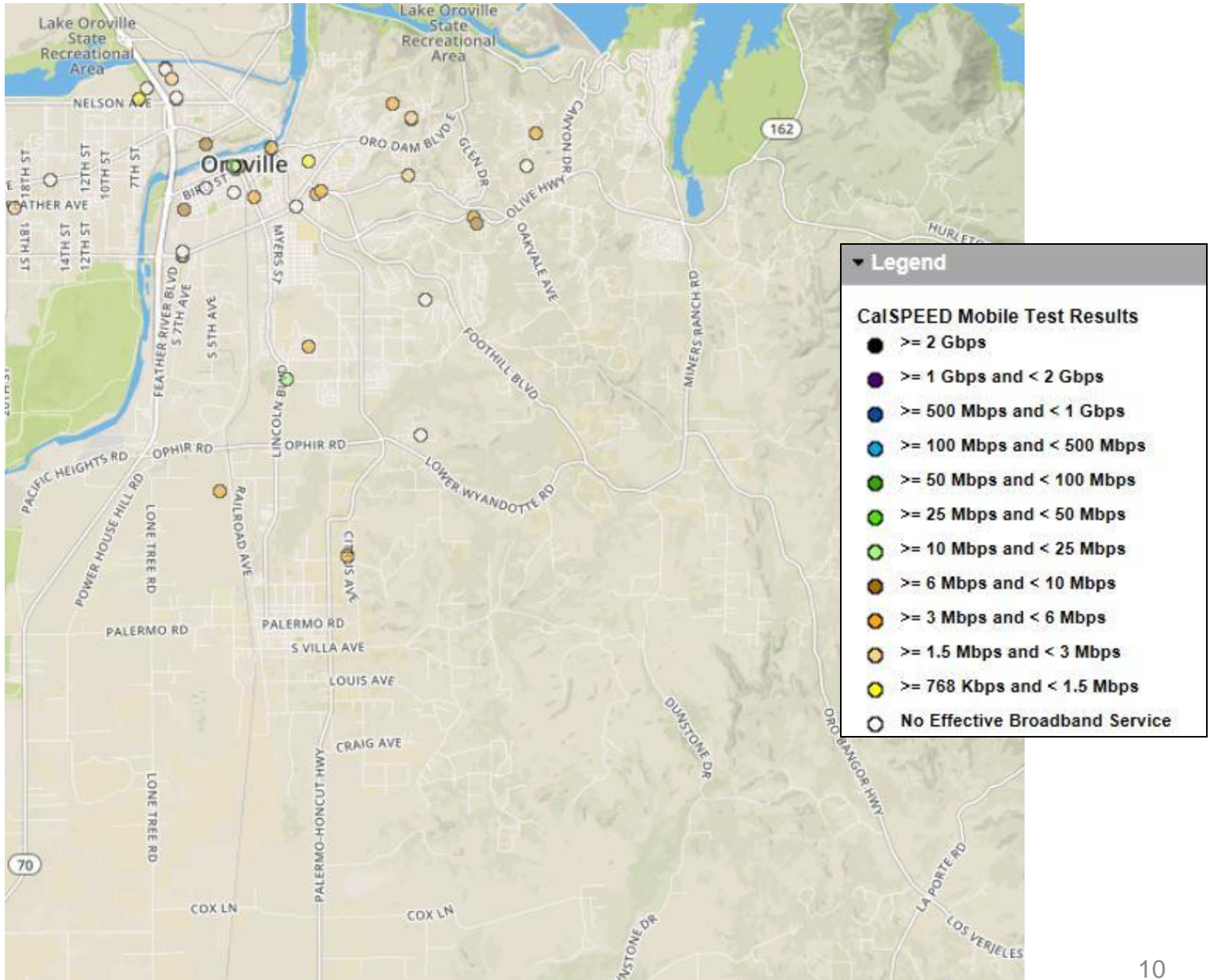
Fixed Wireless Served Status



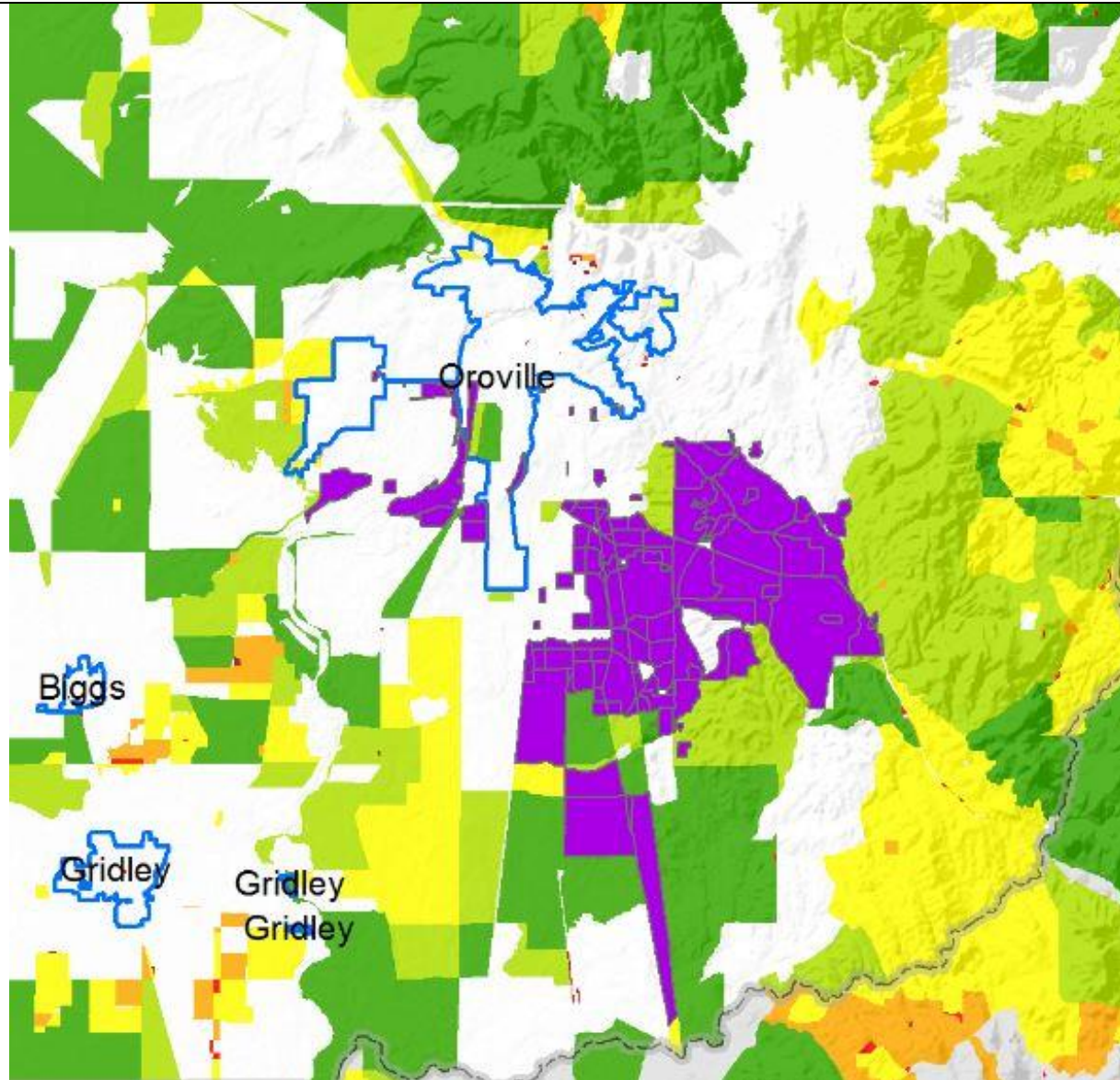
Housing Density in Filtered Census Blocks



CaSPEED Mobile Testing



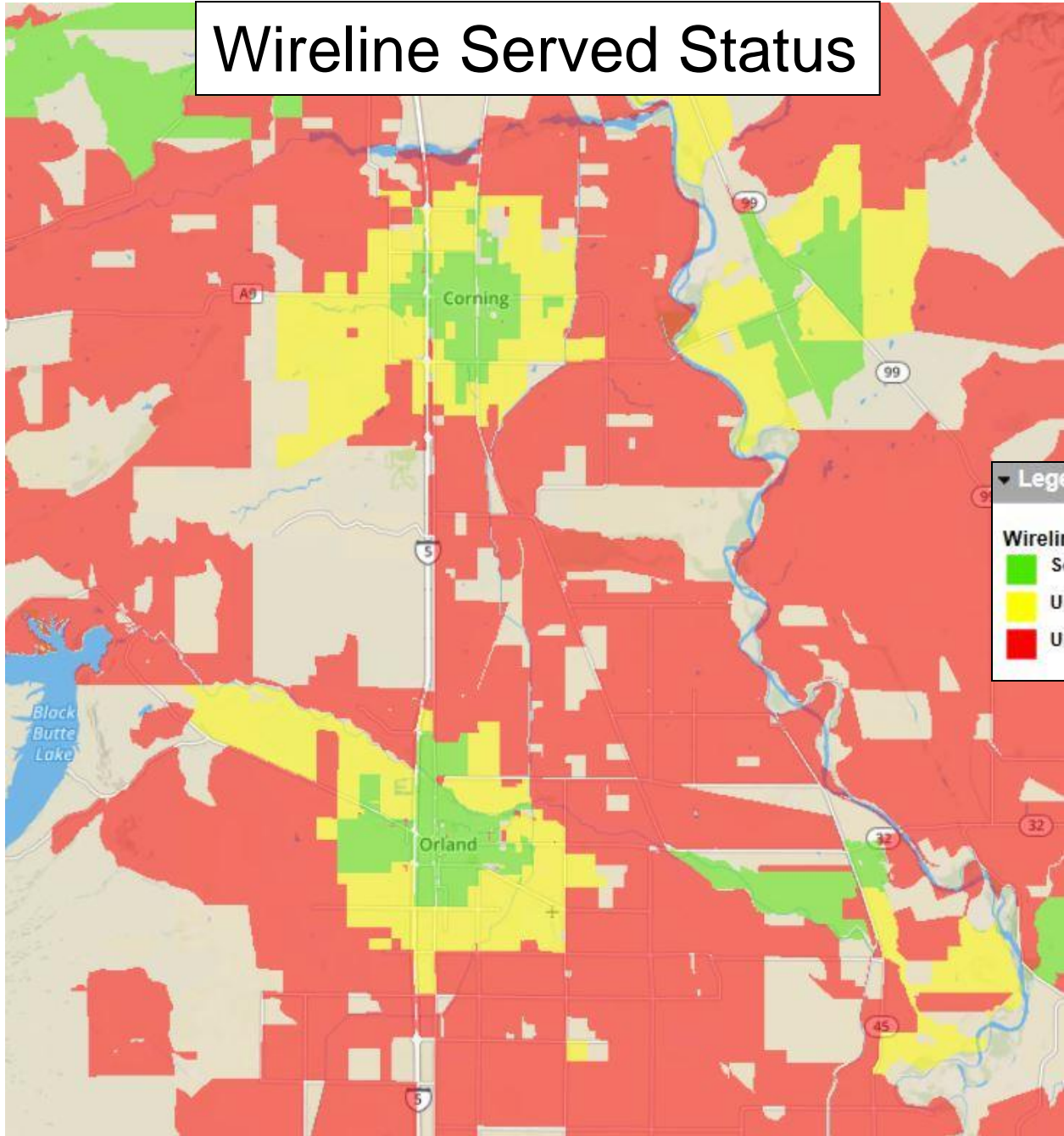
Post-Filter Census Blocks (in purple)



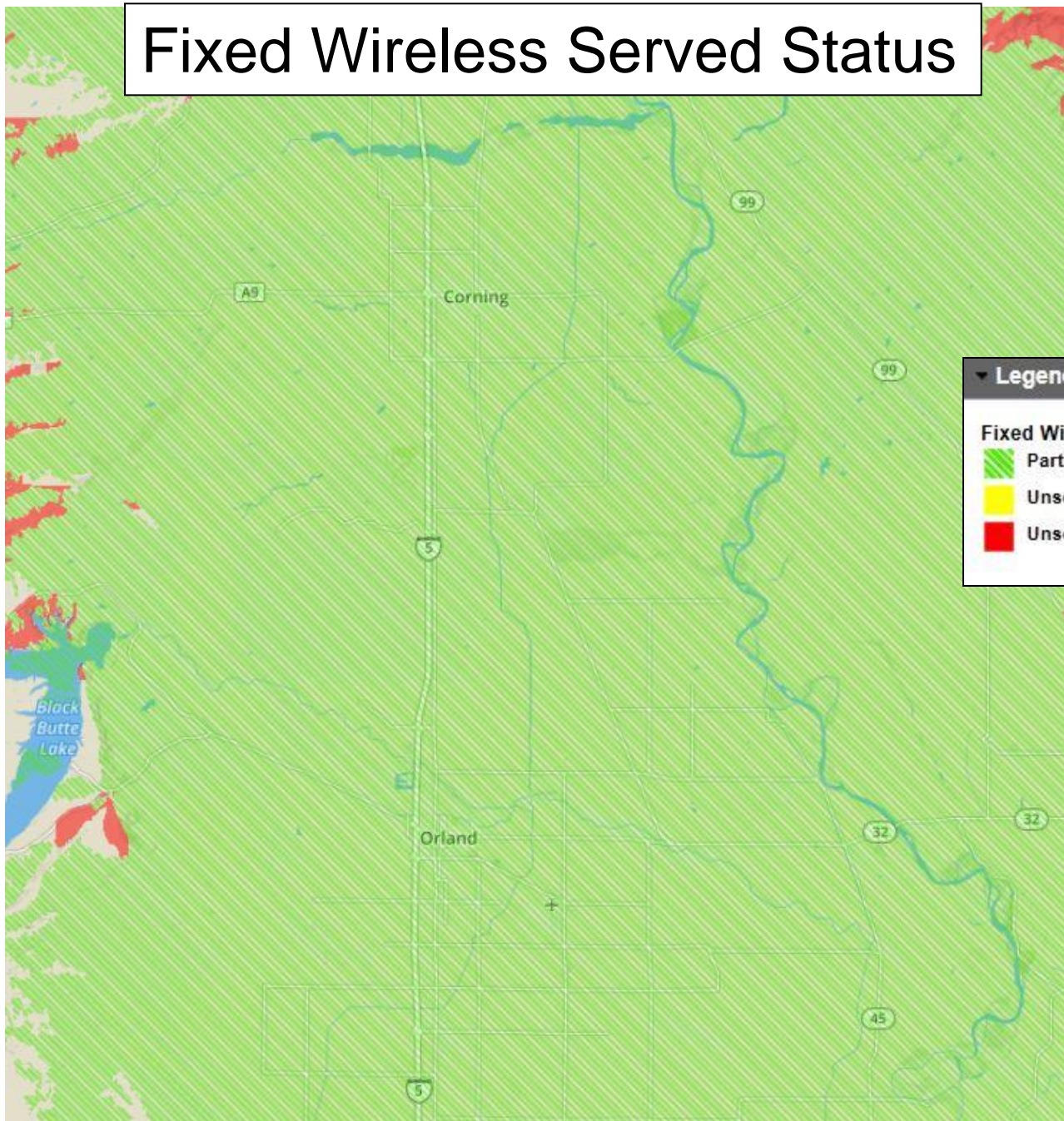
Demographic Statistics of Post-Filter Census Blocks South Oroville/Palermo

South Oroville/Palermo	
Density threshold: (unserved blocks with lower density excluded)	> 5
Census blocks:	144
Households:	1,263
Households in blocks Unserved with Slow Service:	119
Households in blocks with Unserved No Service:	1,144
Overall density (includes only selected blocks):	47
Population	3,372
MHI 2014	42,575
Households in blocks > 20% poverty:	83
Households in CAF II blocks:	0
Households in ROFR blocks:	0
Households in Merger Commitment blocks:	0

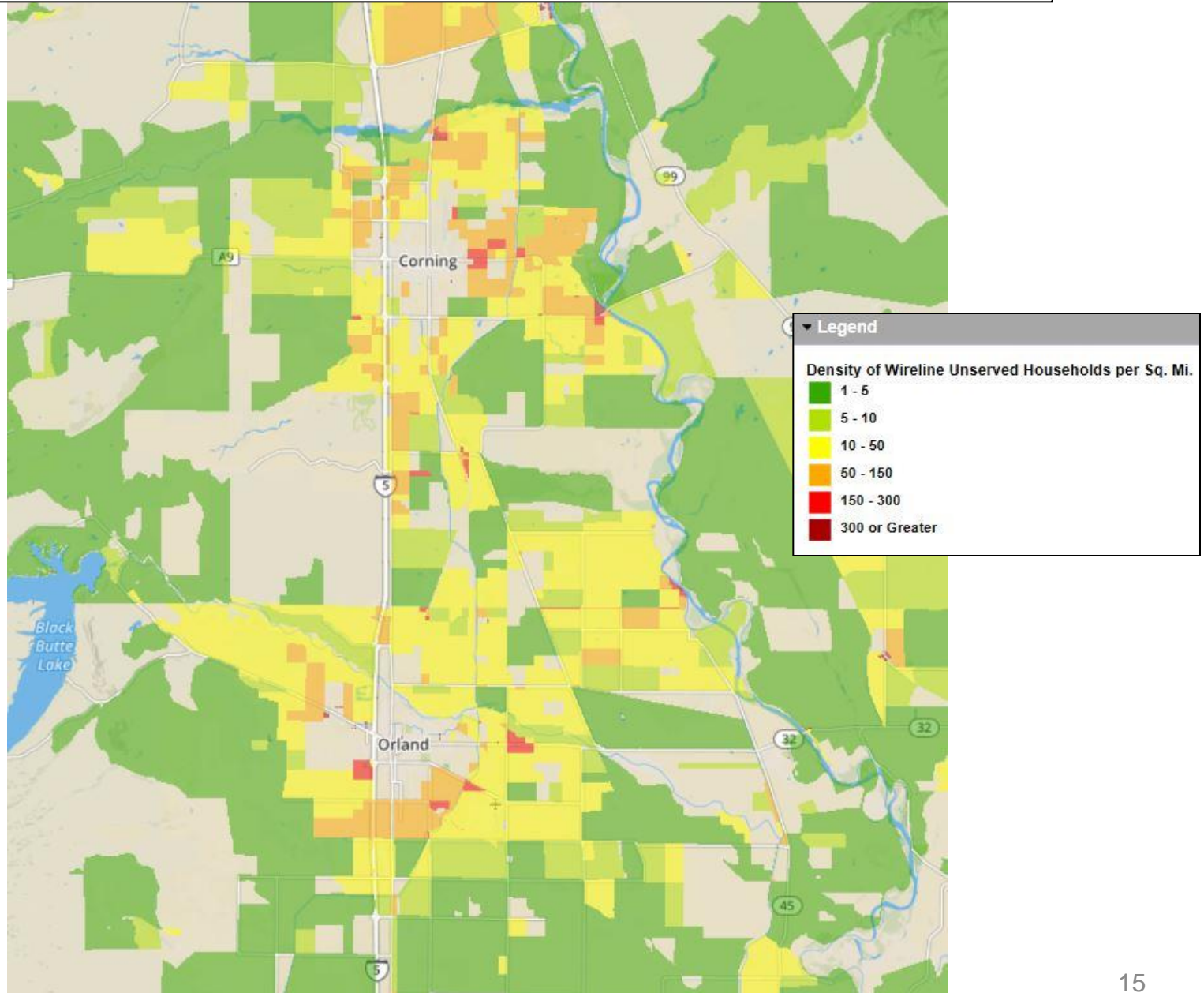
Wireline Served Status



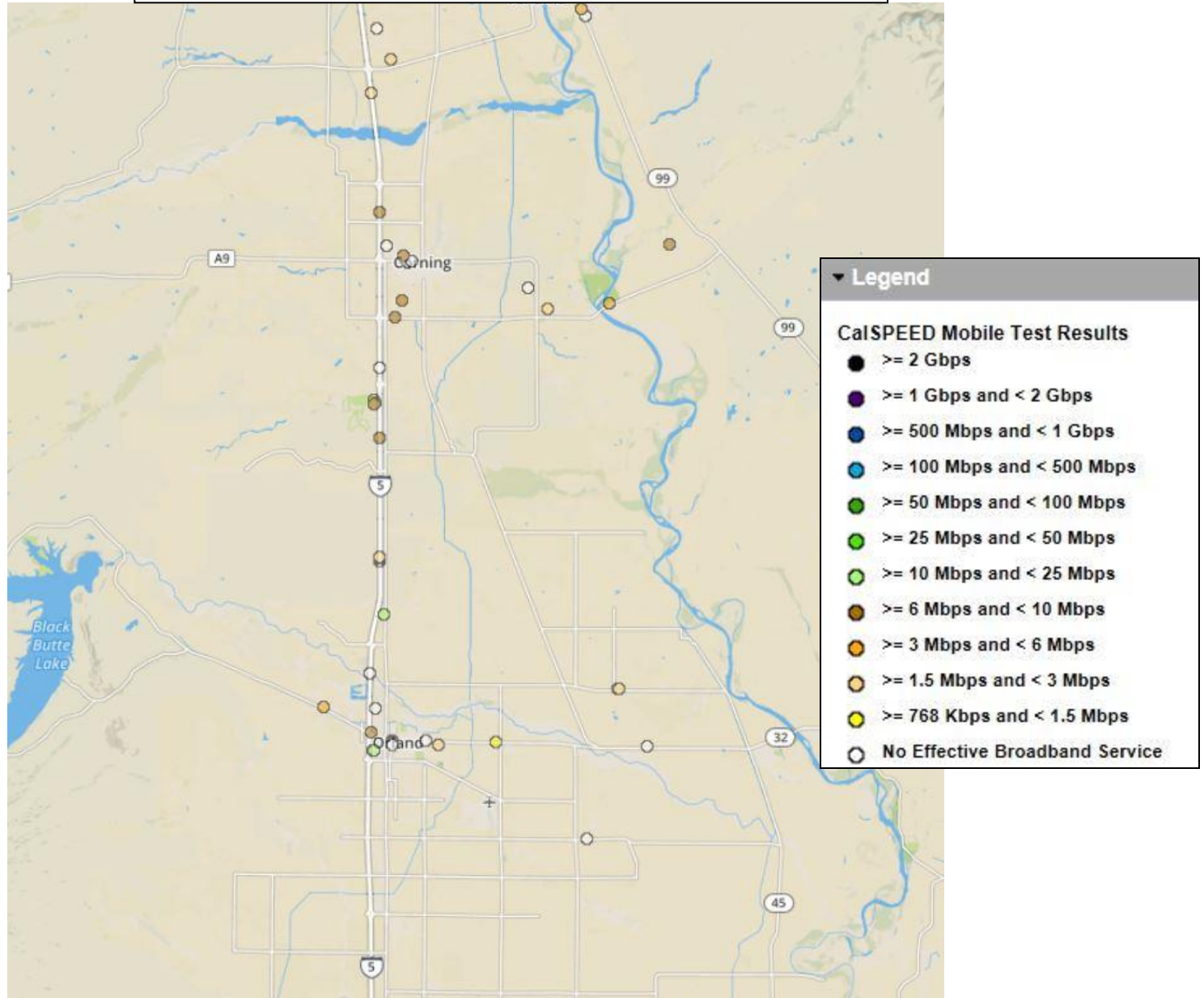
Fixed Wireless Served Status



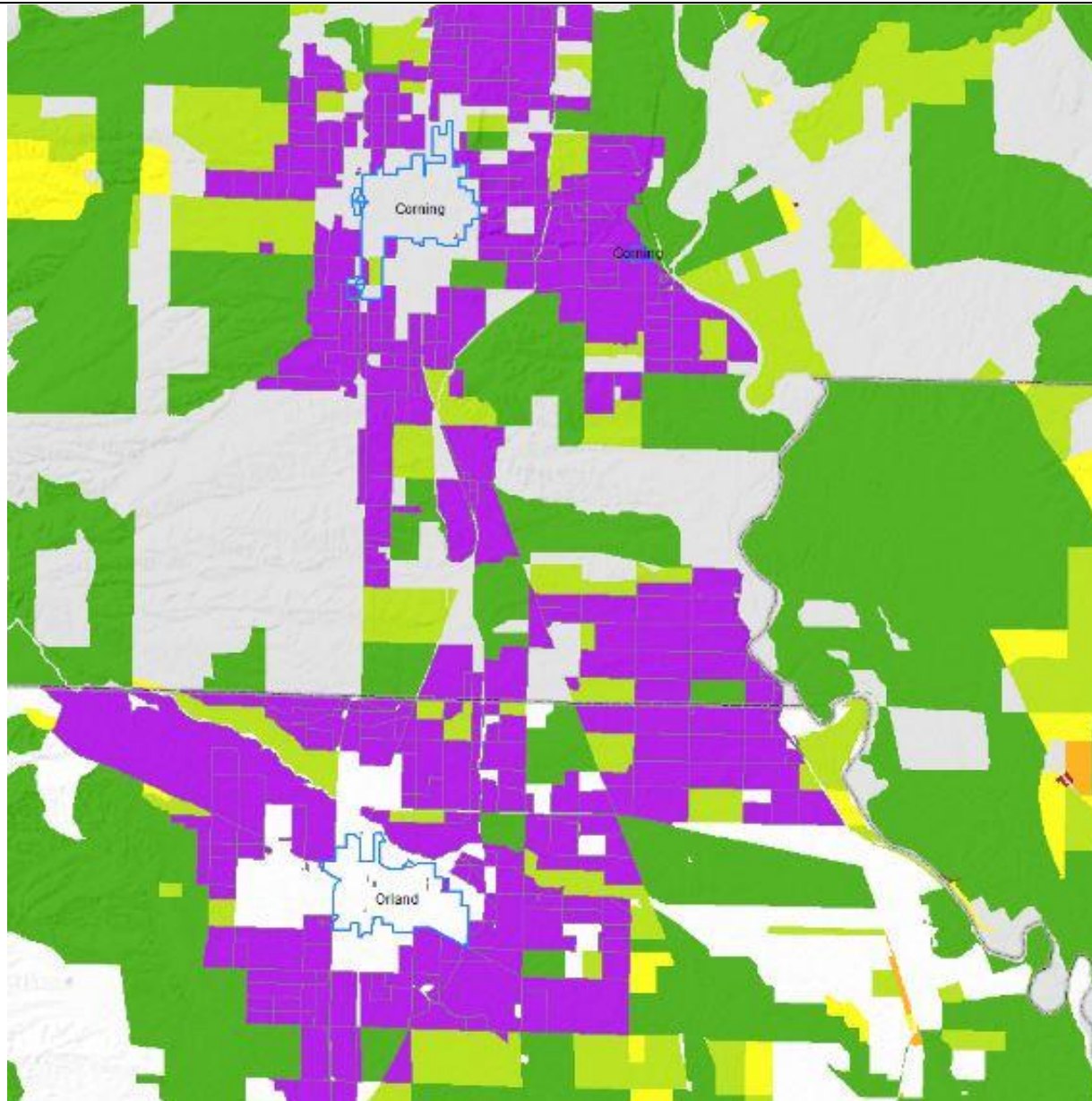
Housing Density in Filtered Census Blocks



CaISPEED Mobile Testing



Post-Filter Census Blocks (in purple)

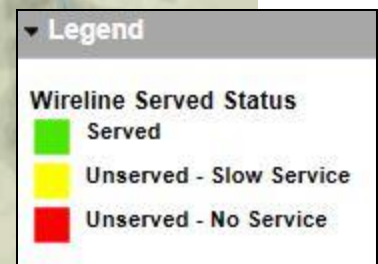
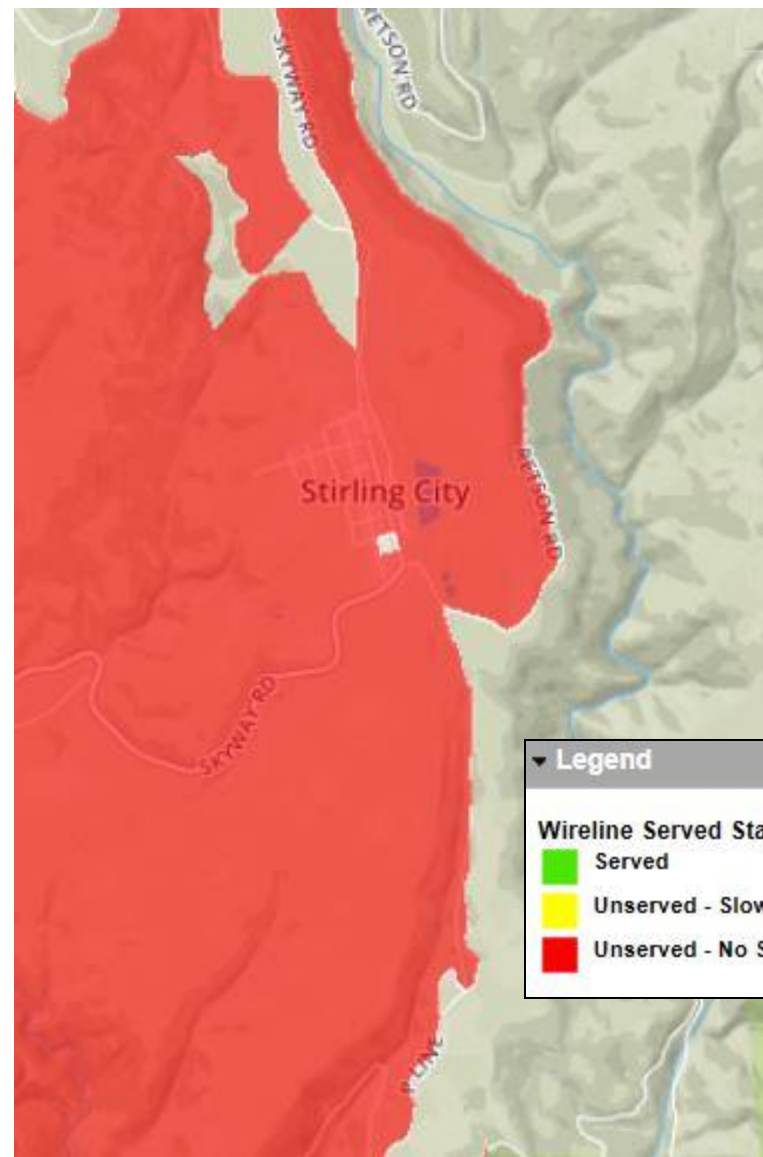
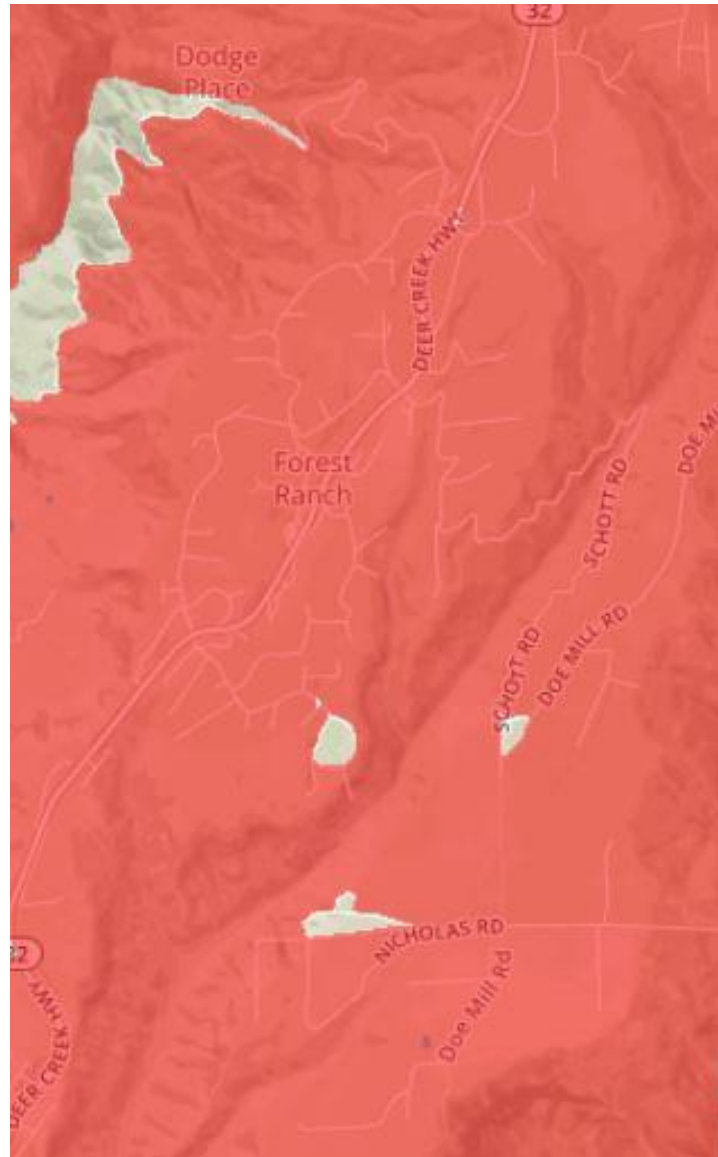


Demographic Statistics of Post-Filter Census Blocks

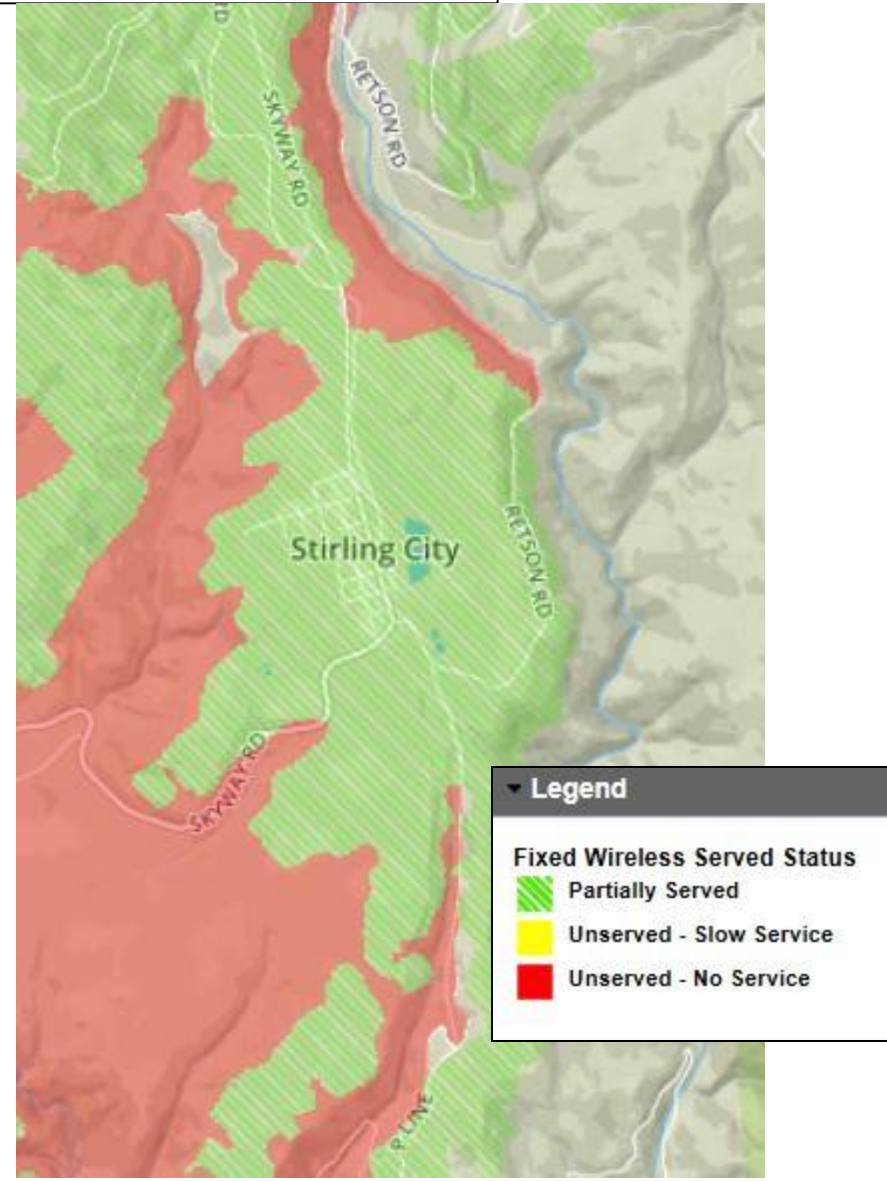
Orland/Corning

Orland/Corning	
Density threshold: (unserved blocks with lower density excluded)	> 10
Census blocks:	431
Households:	3,672
Households in blocks Unserved with Slow Service:	1,492
Households in blocks with Unserved No Service:	2,180
Overall density (includes only selected blocks):	44.99
Population	10,493
MHI 2014	\$ 48,991
Households in blocks > 20% poverty:	936
Households in CAF II blocks:	0
Households in ROFR blocks:	0
Households in Merger Commitment blocks:	0
Fixed wireless	Yes

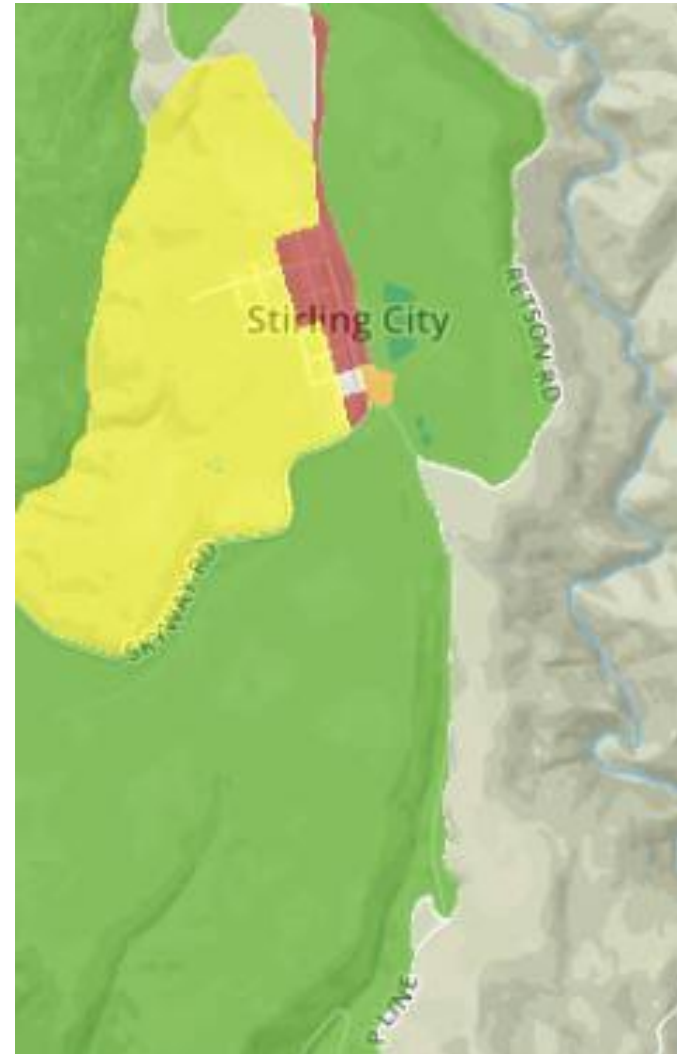
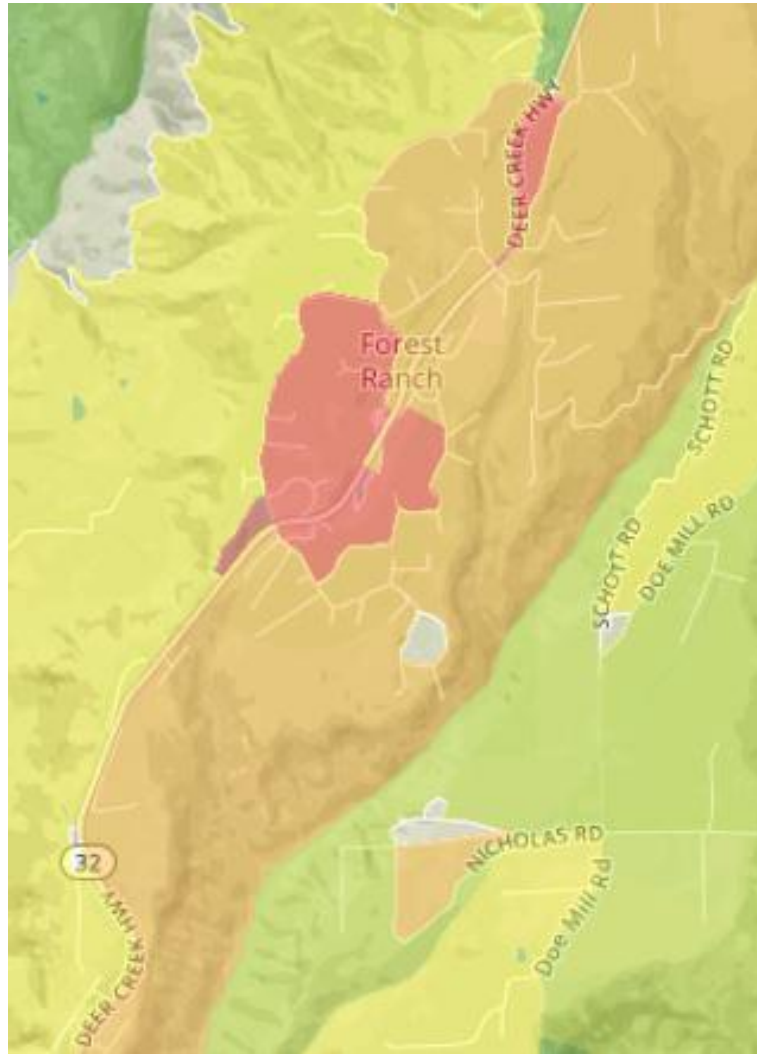
Wireline Served Status



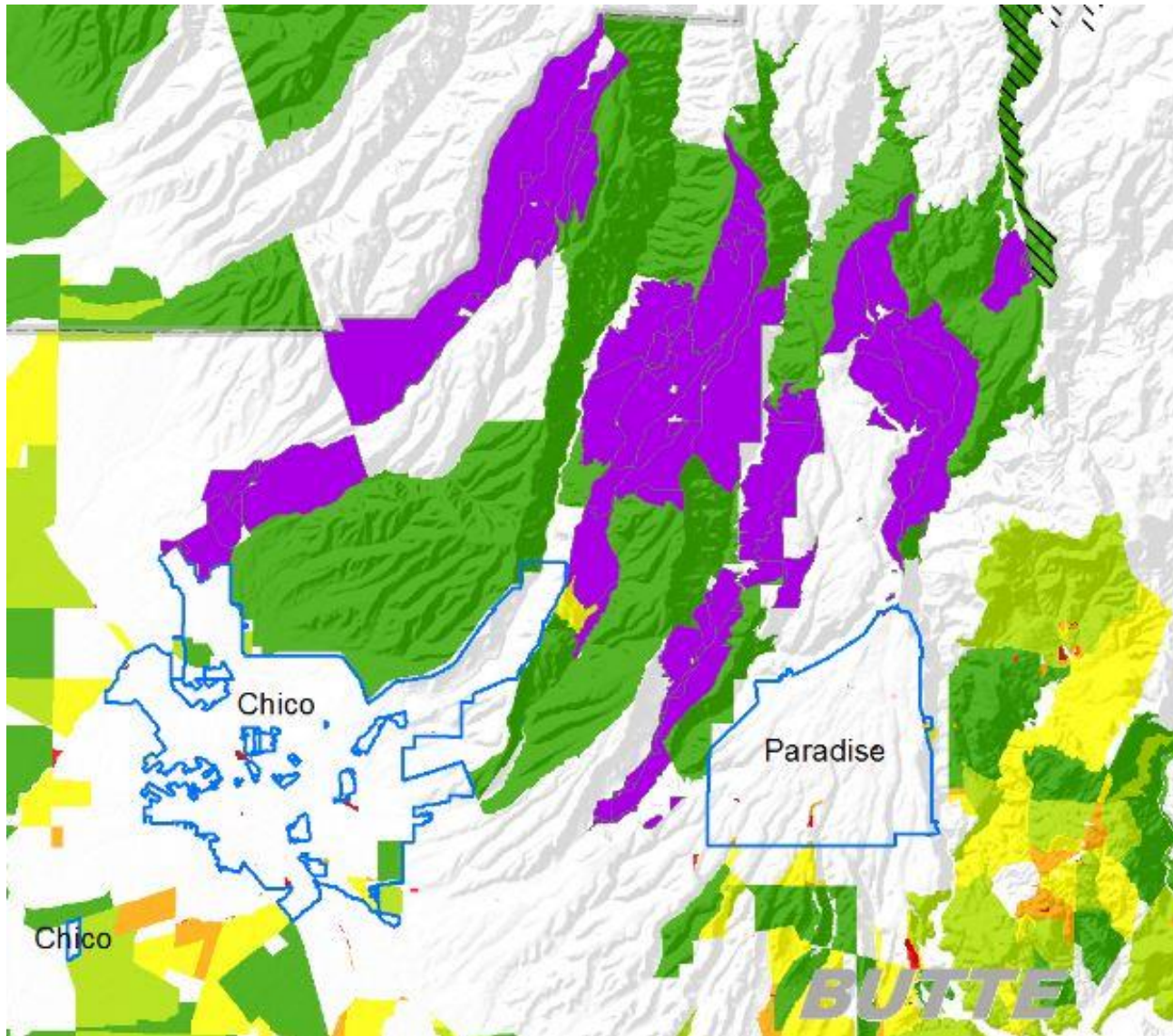
Fixed Wireless Served Status



Housing Density in Filtered Census Blocks



Post-Filter Census Blocks (in purple)



Demographic Statistics of Post-Filter Census Blocks Forest Ranch/Sterling City

Forest Ranch/Stirling City	
Density threshold: (unserved blocks with lower density excluded)	> 5
Census blocks:	110
Households:	1,622
Households in blocks Unserved with Slow Service:	154
Households in blocks with Unserved No Service:	1,468
Overall density (includes only selected blocks):	27.16
Population	3,815
MHI 2014	\$ 50,952
Households in blocks > 20% poverty:	318
Households in CAF II blocks:	16
Households in ROFR blocks:	0
Households in Merger Commitment blocks:	0
Fixed wireless	Spotty