

PST Southern Lassen Project Summary

Applicant:

Plumas-Sierra Telecommunications

U-Number: U-7218-C

Contact Person:

Corby Erwin

Member Services Manager

73233 State Route 70

Portola, CA 96122

530-832-6034

cerwin@psrec.coop

Project Title:

PST Southern Lassen Mid-Mile / Last-Mile Broadband Project

Proposed Project Area Location:

Southern Lassen area, Lassen County

Project Type:

Hybrid Mid-Mile and Last-mile

CASF Funding Requested:

\$ 11,890,662 in grant funds

Description of the Project:

To leverage the current PST mid-mile fiber network for which Plumas-Sierra Telecommunications was awarded ARRA and CASF funds, PST is now applying for additional CASF funding to deploy further mid-mile and last-mile broadband networks to serve the Southern Lassen area of Lassen County.

The mid-mile network expansion is vital to reach the deployment area for the last-mile target residences. The last-mile network will use fiber optic wireline technology interconnected with PST's mid-mile fiber network to offer service to 778 households in these unserved areas of Lassen County.

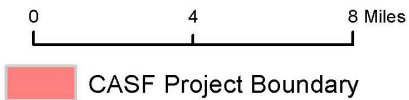
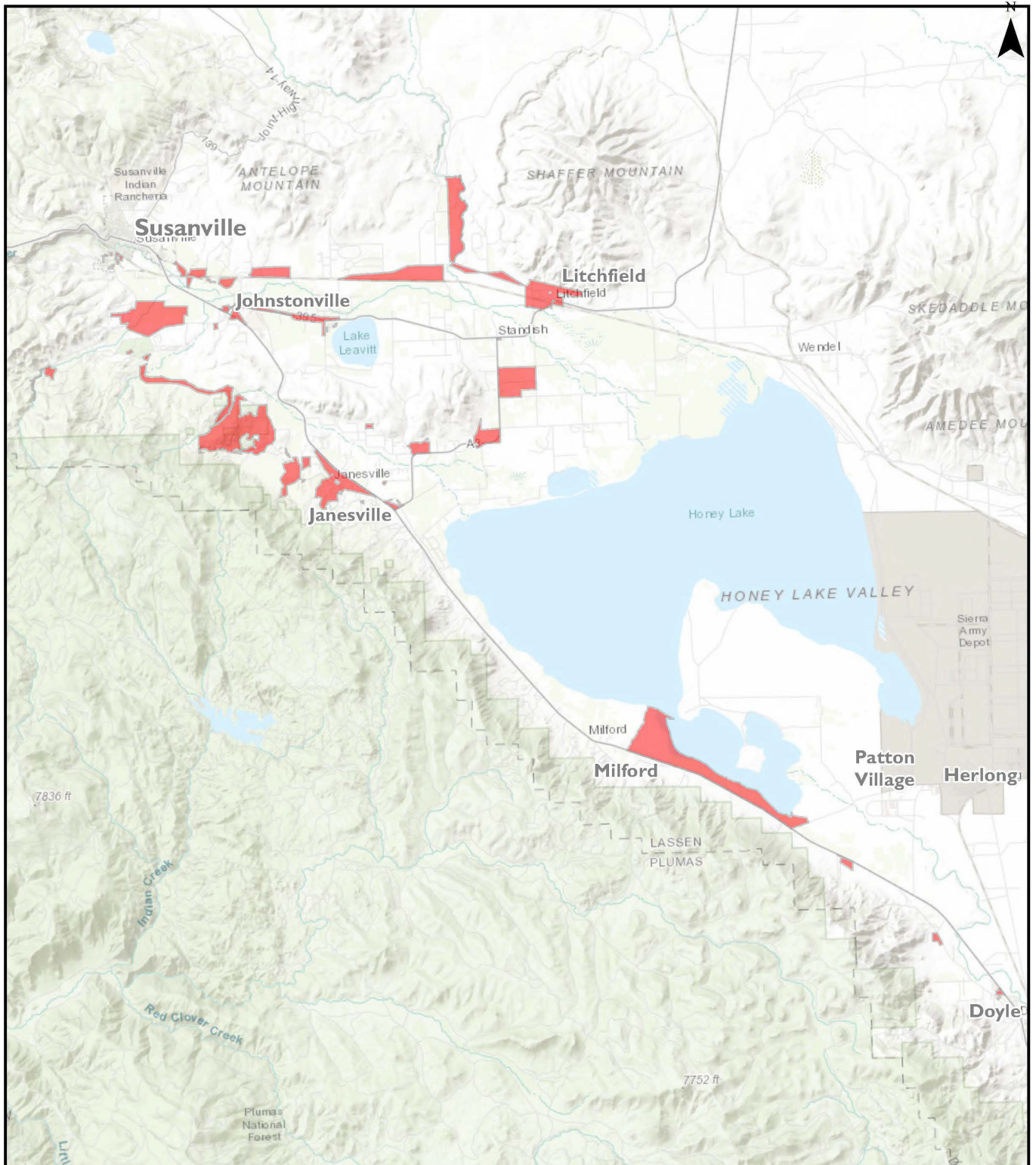
Service offerings will include minimum speeds of 10Mbps down/1Mbps up and maximum speeds of up to 1Gbps down/1Gbps up. PST's service offerings will not have data caps.

The use of fiber optics will allow PST to provide the households in this application with the most current technology, offering an improved quality of life that is not available to these residents now because of their current broadband isolation.

The COVID-19 Pandemic has highlighted the need for broadband services for working and learning from home. This project will provide much needed service in these rural areas of California.

Map of the proposed project follows on the next page.

Plumas Sierra Telecom - CASF Project: Southern Lassen



Date: March 12th, 2020



GEOGRAPHICAL INFORMATION CENTER
California State University, Chico

Fixed Broadband Served Status by Census Block within project area:

| | Unserved | | |
|--------------------------------|-----------------------|------------------------------|-----------------------|
| | - Slow Service | Unserved - No Service | Unserved Total |
| Population | 439 | 1291 | 1730 |
| Households | 204 | 574 | 778 |
| Housing Units | 223 | 645 | 868 |
| Addresses (from Item 4) | 223 | 709 | 932 |

This project will bring service to 932 address locations which are outlined in Item 4. These addresses are derived from the most current Lassen County parcel database.

Census Blocks to be served:

- 060350403021004
- 060350403021007
- 060350403021009
- 060350403021010
- 060350403021013
- 060350403021015
- 060350403021023
- 060350403021026
- 060350403021027
- 060350403021031
- 060350403021032
- 060350403021033
- 060350403021035
- 060350403021048
- 060350403021050
- 060350403021056
- 060350403021057
- 060350403021058
- 060350403021060
- 060350403022000
- 060350403022024
- 060350403022036
- 060350403022041
- 060350403022044

060350403022045
060350403022060
060350403022061
060350403023007
060350403023018
060350403023023
060350403023024
060350403023025
060350403023029
060350403023032
060350403023074
060350403023089
060350403023090
060350403023104
060350403023107
060350403031029
060350403031040
060350403031067
060350403031077
060350403031078
060350403042027
060350403042043
060350403042044
060350404001001
060350404001009
060350404001015
060350404001016
060350404001018
060350404001020
060350404001021
060350404001022
060350404001024
060350404001037
060350404001042
060350404001046
060350404001057
060350404001058
060350404001059
060350404001061
060350404001076
060350404001112
060350404001124
060350404001131

060350405001005
060350405001007
060350405001011
060350405001017
060350405001022
060350405002013
060350405002014
060350405002016
060350405003001
060350405003003
060350405003008
060350405003016
060350405003018
060350405003026
060350405003031
060350405003033
060350405003035
060350405003042
060350405003045
060350405003047
060350405003049
060350405003052
060350405003055
060350406001273
060350406001276
060350406001349
060350406001354
060350406003042
060350406003095
060350406003097
060350406003100
060350403021029
060350403022006
060350403022007
060350403022008
060350403022039
060350403023040
060350403023075
060350404001068
060350405001002
060350405003038
060350405003041

Funding Level:

The area applied for is 100% unserved according to the CPUC's 2019 Housing Unit projections. No existing CAF II areas are within project area. Requesting 100% project funding.

The project area includes 109 census blocks in Lassen County in the community of Southern Lassen. This area encompasses 32.12 Square Miles.

Median Household Income: \$62,624

Anchor Institutions, Public Safety Locations and Businesses:

The project area includes three Anchor Institutions or Public Safety Locations as identified by the current California Interactive Broadband Map.

There are 60 businesses in the proposed project area.

Major Infrastructure and Equipment to be Deployed:

- 1 E7 Chassis
- 2 GPON card
- 16 40K SFPs
- Cienna Switch

Aerial and Underground Installation:

- 32.2 Miles of underground infrastructure
- 221.5 Miles of overhead infrastructure

Estimated Construction Timeline: 9 months

Proposed Broadband Project Plan:

The PST Southern Lassen Mid-Mile / Last-Mile Broadband Project plans to use fiber optic cable to provide download speeds of up to 1 Gbps and upload speeds of up to 1 Gbps with no data caps.

PST is leveraging its current mid-mile fiber network for which it was awarded ARRA and CASF funds, and existing infrastructure of its parent company, Plumas-Sierra Rural Electric Cooperative to deploy this additional mid-mile and last-mile broadband network to serve the Southern Lassen area of Lassen County. The mid-mile network expansion is vital to reach the deployment area for the last-mile target residences because there is no existing mid-mile infrastructure to interconnect with for this project, and without it, PST will not be able to provide service to these areas.

Plumas-Sierra Telecommunications believes that this mid-mile / last-mile broadband project is categorically exempt from CEQA requirements based on the findings of the CEQA analysis conducted for the previous ARRA grant, and because PST is using existing public utility easements considered previously disturbed. PST believes this project is exempt under CEQA Article 19, Sections 15301 b and

15303 d.

PST is not disputing the Broadband Map depiction of served status.

PST is not seeking Ministerial Review of this project.