

## Hunter Communications Inc. CASF Broadband Infrastructure Grant Application

### Project Summary

Applicant's Name:	Hunter Communications Inc.
CPCN/U:	U-7281-C
Project Title:	<b>Mendocino County Project 1</b>
Named Project Location:	Mendocino County Round Valley/Covelo/Dos Rios, Laytonville, Willits, Hopland, Ukiah, Talmage, Calpella, Redwood Valley, Yorkville, and Potter Valley and surrounding areas
Project Type:	Last Mile
CASF Grant Funding Request:	\$290,327,940
Project Cost:	\$290,327,940
Contact Person:	Keith Grunberg, Director of Business Services 801 Enterprise Drive Center Point, OR 97502 Mobile: (503) 819-7885 Fax: (541) 727-3066 <a href="mailto:kgrunberg@hunterfiber.com">kgrunberg@hunterfiber.com</a>
<b>UNSERVED HOUSEHOLDS INCLUDED IN GRANT REQUEST</b>	
<b>COMMUNITY</b>	<b>CASF ELIGIBLE HOUSEHOLDS-TARGETED</b>
COVELO	970
HOPLAND	515
LAYTONVILLE	790
WILLITS	1,466
UKIAH	1,084

TALMAGE	19
CALPELLA	63
REDWOOD VALLEY	480
POTTER VALLEY	483
<b>TOTAL</b>	<b>5,870</b>
Speed Mbps Offered	The maximum Mbps downstream and upstream speed currently offered to households Under 6Mbps downstream and 1Mbps upstream.
Median Household Income	With a total weighted average median Household Income of \$46,552
Estimated Number of Businesses, anchors and Public safety locations:	<p>There are 24 anchor institutions, schools and health facilities that could benefit with new services or improved speeds. We have not included public safety until we sort out how this all works with the FirstNet initiative.</p> <p>Eighty-two (82%) of the 5,000 businesses in the County have nine (9) or fewer employees. We are working with the West Company Business Center to identify the businesses in the nine community areas.</p>
<p>Description of major infrastructure to be deployed:</p> <p>The project provides high-speed Internet, delivered over fiber optic cable to 5,870 premises (Households-HHs) in nine communities and surrounding areas including: Round Valley/Covelo/Dos Rios, Laytonville, Willits, Hopland, Ukiah, Talmage, Calpella, Redwood Valley and Potter Valley. A total of 919.56 miles of 100% underground fiber routes are being deployed across these nine areas creating a seamless distribution system, consisting of core arteries and distribution, last-mile and drops which we will collectively refer to as “Last-Mile” for the remainder of the document. The last-mile fiber drops to at least 90% of the 5870 (5283) households, at an average of 300 feet per household, adds another 300 miles. This includes three Central Offices for backhaul which 3 Huts will be for fiber aggregation. Plans are to construct 15 remote XPON cabinets and 12 fixed wireless towers for WiFi access and space for WISP/Wireless for Carrier access.</p>	

<p>Also, there are twelve (12) locations, one in each community, where stand-alone towers are being placed to provide fixed wireless access, via WISPs, to reach up to 10% of the outlying households, or 587.</p> <p>The fiber design calls for deploying as much fiber underground as possible to preserve infrastructure during wildfires and other unforeseen disasters. According to an assessment by Magellan Advisors for Napa County 30 percent of the telecommunications infrastructure was damaged by the 2017 wildfires. None of the underground infrastructure was damaged.</p>	
<p>Breakdown of Aerial and Underground installation:</p>	<p>Ninety (90%) percent of the Households, 5283, are estimated to be connected via underground fiber installation and up to Ten (10%) percent, 587 households, via fixed wireless, pending more detailed design after the grant award.</p>
<p>Major Equipment Expenses</p>	<p>Major equipment expenses from Nokia/Ciena Juniper/META will include:</p> <ul style="list-style-type: none"> <li>12 Wireless Stand-alone Towers</li> <li>72 Wireless Antennas</li> <li>7 Shelters (12' x 20")</li> <li>6 Backup Generators</li> <li>20 144 Fiber Termination Panels with Connectors</li> <li>1 Media Gateway with TDM Capability</li> <li>1 VM Stack for EAS, MV, N Series and SAS</li> <li>7 Core Routers</li> <li>4 10 Gbps Optical Transmit/Rcvrs w/4" ROADMs</li> <li>15 Edge Routers</li> <li>15 GPON Cabinets</li> <li>330 XPON OLT Ports</li> <li>245 XPON OLCs</li> <li>1321 XPON Splitters</li> <li>1321 Hand Holes/Pull Boxes</li> <li>5870 XPON ONTs w/Router, Battery</li> <li>587 Wireless HH Antennas and Radios</li> <li>1219 Miles of Conduit and 144 ct Fiber</li> <li>4888 Vaults and Splice Cases</li> <li>4855 Pull Boxes</li> </ul>
<p>Estimated construction timeline:</p>	<p>The deployment schedule assumes a start date of January, 2021 and a completion date of June, 2025, or a total of 42 months from start to finish, including time to process all necessary permits.</p>

Description of proposed broadband project plan:

The Hunter fiber approach is to provide up to 1 Gbps symmetrical Internet connectivity and voice service to all 5,870 homes, plus businesses, anchors, and other institutions in the nine community areas via a robust XPON fiber network, augmented by fixed wireless to reach the more remote households. These nine community areas include several Native American Tribes including: Round Valley Tribes and Reservation (Round Valley/Covelo), Cahto Tribe and Rancheria (Laytonville), Sherwood Valley Pomo Tribe and Rancheria (Willits), Potter Valley Tribe (Potter Valley), Pomo Tribe (Redwood Valley), Coyote Valley Band of Pomo Indians (Redwood Valley), Pinoleville Pomo Nation (Ukiah), Guidiville Rancheria (Ukiah) and the Hopland Band of Pomo Indians (Hopland).

Hunter has designed and will build and operate the network by providing all the necessary equipment to light the network. Our primary goal is to provide a reliable high-speed Internet network to the all potential users in the communities at a competitive price, encouraging economic development, providing excellent customer service and doing so it in a manner that minimizes risk.

Hunter’s design calls for the FTTx XGS PON Technology network to utilize a passive optical network for residential and small business, and Active Ethernet for larger businesses, cell towers, and WISP’s. Hunter will utilize this hybrid approach to create a state-of-the-art network designed with the future in mind. This do it right approach will take into consideration minimizing downtime caused by wildfires, future bandwidth needs, and future technological advancements.

Each of the nine community areas are planned to have either a hut or cabinet based upon size of the community; these locations will service as the aggregated data center where the last-mile distribution system where we plan to place fiber terminals, core and edge routing, and Optical Line Terminals (OLT) and where the infrastructure will be extend via fiber drops to connect the households.

For larger businesses and tower locations we will provision for either a dark fiber or lit service using traditional industry interconnection equipment (small router). Our intent is enable wireless carriers to build out their networks to further enhance voice and data connectivity to this rural and neglected area.

<u>Download</u> speed capabilities of proposed facilities:	The maximum residential service <b>Download</b> speeds customers may subscribe to are: <b>1000 Mbps.</b>
<u>Upload</u> speed capabilities of proposed facilities:	The maximum residential service <b>Upload</b> speeds customers may subscribe to are: <b>1000 Mbps.</b>

<p><b>Preliminary indication of need for CEQA review:</b></p>	<p>Hunter has contacted the Commission’s Energy Division CEQA section in advance of filing this application and has consulted with CEQA Staff regarding the process of developing and filing a Proponent’s Environmental Assessment (PEA) or other CEQA documents. Hunter is aware of its responsibilities if this proposed project is not exempt from CEQA. Hunter anticipates that parts of the project will require CEQA review and other parts will not which will also be identified by CalTrans.</p>
---	--

**Benefits of Project**

**Resilience** - By deploying fiber underground, as opposed to aerial, this Last-Mile Distribution System will be better protected against wildfires, other unforeseen disasters and outages.

**Tribes** - In addition to providing broadband access to 5,870 households this project would also be serving the needs Native American Tribes located within the project area including: Round Valley Tribes and Reservation (Round Valley/Covelo/Dos Rios), Cahto Tribe and Rancheria (Laytonville), Sherwood Valley Pomo Tribe and Rancheria (Willits), and Hopland Band of Pomo Indians (Hopland).

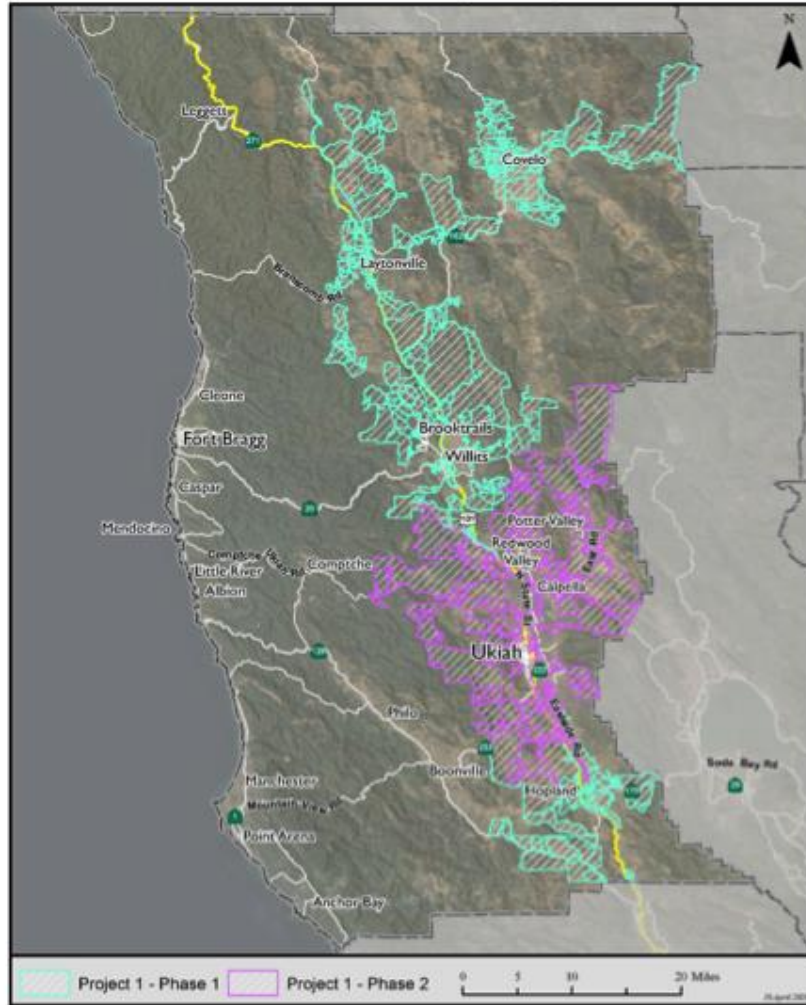
**Low-Income** - With a total weighted average median Household Income of \$46,552, this project is serving a population that is well below the \$51,500 CASF standard. According to official CPUC data this project serves 2,725, or 46.4% of the households are considered below 200% of Federal Poverty. This project provides broadband services to these qualified households at \$14.99 per month for 25 Mbps download and upload speeds.

**No Service** - Based on the official 2019 CPUC Data Availability and Mapping Report, there are no providers currently serving Round Valley/Covelo/Dos Rios with 970 targeted Non-Served households.

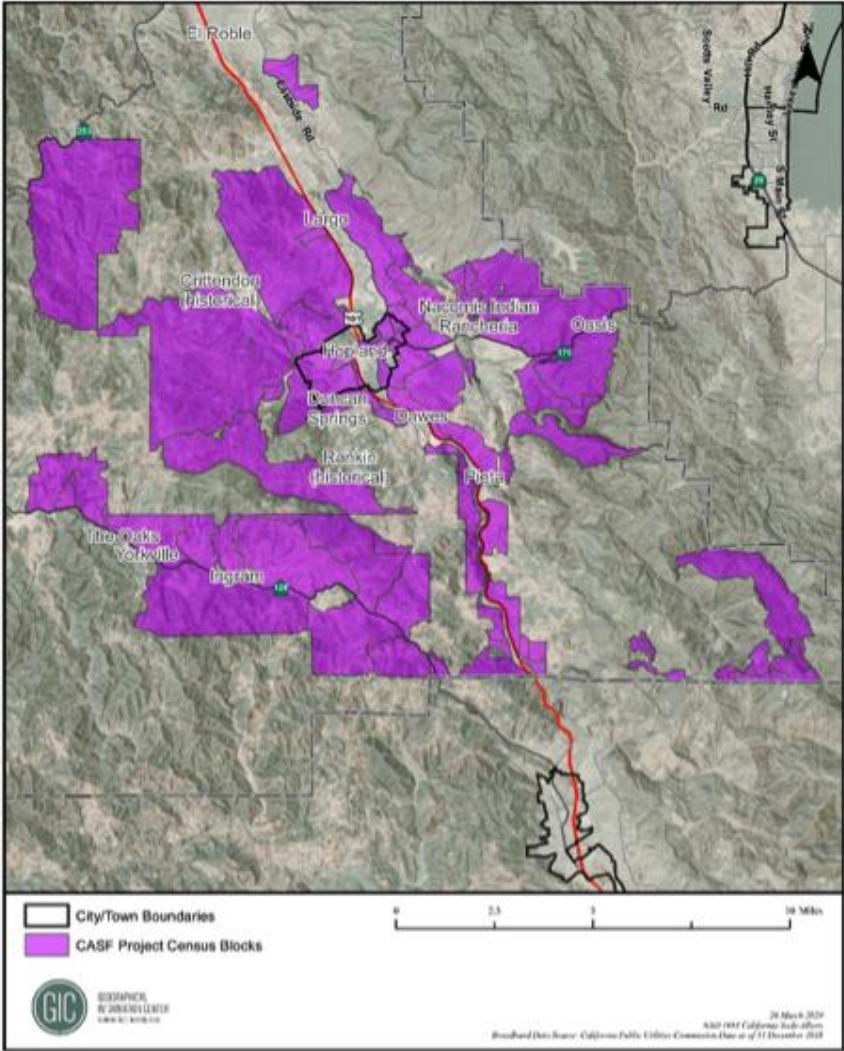
**Closing the Digital Divide** - Finally, this project makes a significant contribution to the NBNCBC region achieving the State’s 98% access goal for all regions throughout the state.

MAPS OF THE PROPOSED PROJECT AREA

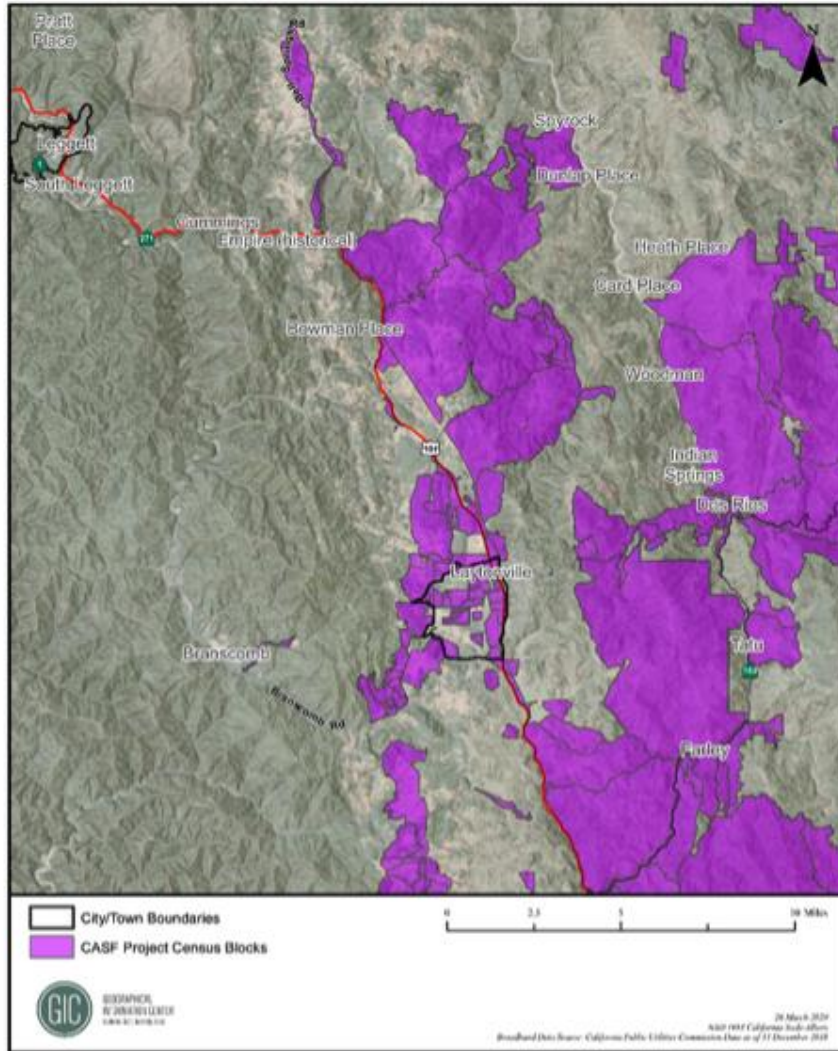
**Mendocino County - Project 1**



### CASF Project Mendocino County- Hopland

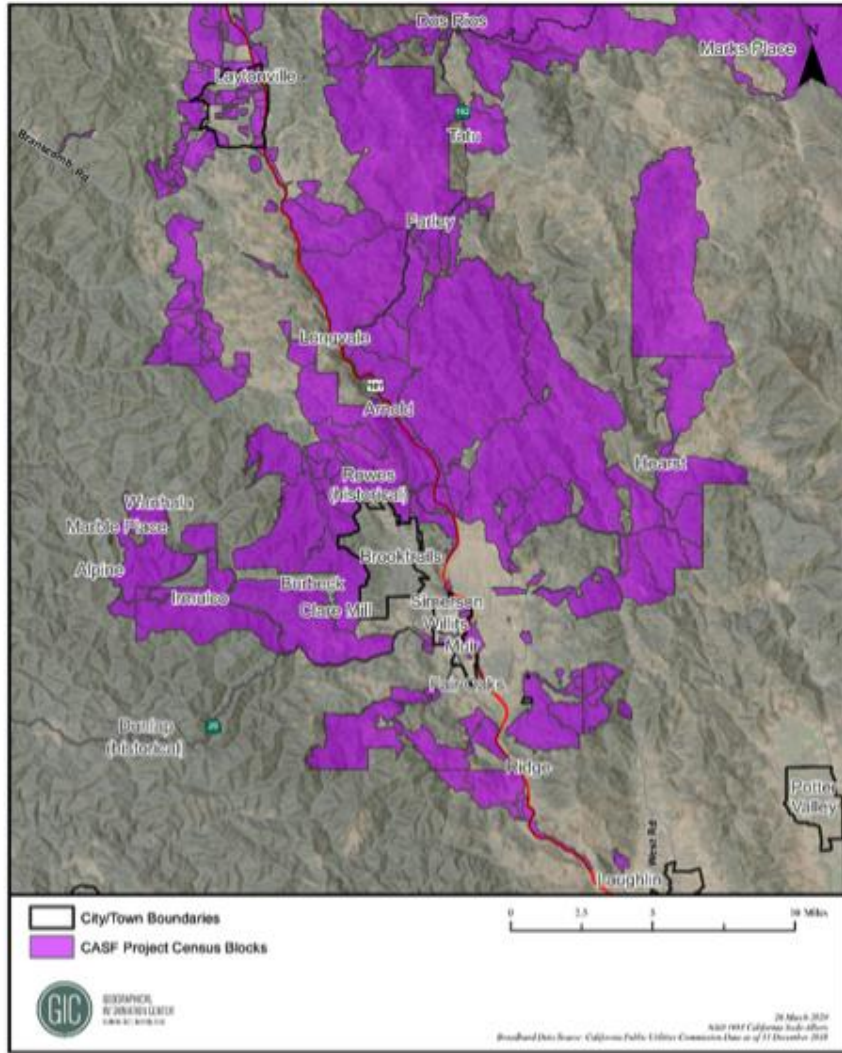


### CASF Project Mendocino County- Laytonville

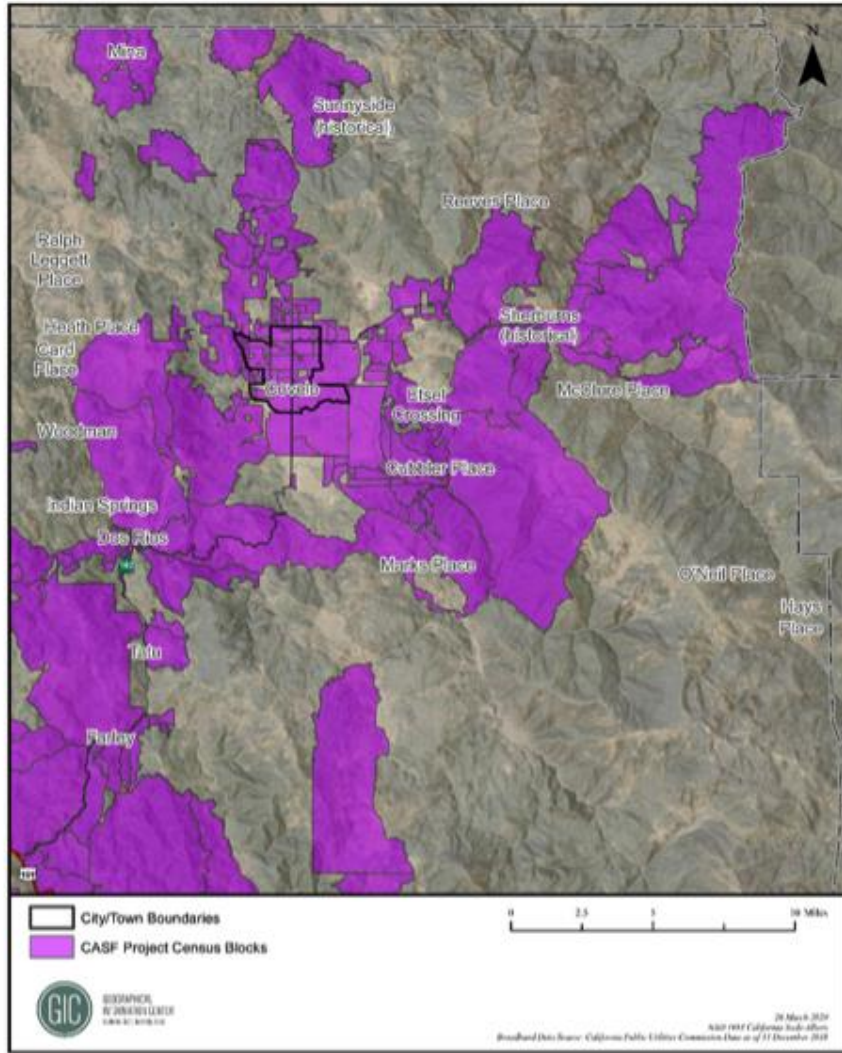




### CASF Project Mendocino County- Willits



### CASF Project Mendocino County- Covelo



Zip Codes

93514	95482
95428	95418
95429	95481
95417	95418
95454	95470
95490	95469
95449	95494

Census Blocks

060450101003058	060450102005076
060450101003075	060450118001404
060450118002085	060450118002005
060450107001008	060450101003072
060450106001013	060450101003031
060450106001052	060450101001416
060450106001070	060450101001450
060450106004036	060450101001317
060450101003052	060450101001198
060450101001676	060450101003030
060450101001403	060450118001109
060450101002022	060450118001108
060450101003060	060450101003017
060450101003018	060450101001769
060450101001768	060450101001215
060450101002032	060450101003000
060450101003029	060450101001449
060450101003062	060450101001277
060450102001034	060450118002021
060450101001232	060450101001693
060450101001784	060450101003054
060450101003038	060450102004117
060450101003040	060450102005046
060450101001704	060450101001677
060450101002000	060450101001191
060450101003028	060450118002055
060450118002067	060450118001147
060450102001054	060450118001202
060450101001432	060450118002041
060450118001414	060450118001092
060450118002072	060450101003046
060450102005007	060450101002051
060450102005009	060450102001078
060450102001168	060450102001156

060450102001167	060450106002004
060450101003014	060450106002006
060450102004107	060450101002005
060450101003041	060450101002057
060450102004056	060450101002003
060450101002059	060450102005005
060450101003036	060450102005015
060450118001132	060450102005035
060450118002006	060450118001066
060450118002070	060450118001182
060450101002029	060450102005008
060450102005066	060450102005075
060450102001068	060450101003032
060450101003039	060450101003034
060450101003035	060450102005020
060450101001688	060450102004138
060450101003045	060450102004136
060450101002049	060450102005053
060450102005029	060450106004018
060450102004142	060450106001028
060450102004179	060450106004016
060450102004081	060450106004077
060450102001171	060450106001175
060450102005030	060450106001116
060450106001163	060450107001015
060450106002000	060450102005060
060450108011127	060450102004178
060450102005069	060450101002020
060450102001094	060450101001767
060450118001028	060450101001764
060450102004109	060450102001130
060450102004116	060450102001153
060450102005027	060450102005033
060450102001058	060450101001218
060450101001772	060450102004133
060450101001766	060450107007007
060450101002046	060450107003027
060450101001697	060450106001106
060450101001740	060450102001004
060450101001714	060450108011065
060450101001765	060450107002006
060450102005017	060450107004009
060450106002005	060450106004057
060450102002368	060450106001041

060450106001136	060450107007020
060450106001036	060450107003013
060450118001091	060450102005061
060450118001162	060450102004158
060450118002027	060450102005026
060450118001154	060450106001043
060450102005043	060450107007000
060450106002013	060450106004209
060450106001027	060450106004056
060450106001024	060450106001219
060450106001042	060450101003059
060450106001032	060450101002026
060450102004166	060450101001743
060450102004165	060450101001314
060450102004277	060450106004047
060450102001065	060450102001090
060450101002009	060450102001064
060450101002010	060450102004040
060450101002011	060450102004270
060450101001683	060450106001077
060450101001797	060450106001067
060450101002031	060450106001011
060450102004156	060450106001108
060450102001157	060450106004223
060450102001079	060450118002077
060450102005062	060450102005068
060450102001160	060450102002366
060450106001004	060450106001065
060450106001124	060450106001081
060450106004091	060450106001126
060450107001011	060450106001104
060450107004019	060450106001048
060450106004059	060450106002001
060450107005002	060450107005016
060450106001206	060450106004046
060450106001015	060450106004083
060450106001212	060450106003023
060450106001083	060450101003084
060450118002009	060450101003056
060450102004261	060450101003057
060450102004275	060450101002016
060450107003008	060450101002008
060450107002043	060450101002024
060450107005008	060450102004282

060450102004291	060450102004115
060450102001012	060450102005047
060450106004210	060450102001063
060450106004191	060450102004272
060450107005004	060450102001010
060450106004217	060450102004121
060450107007024	060450102005048
060450102004274	060450102004124
060450102004281	060450106004240
060450106004188	060450106004053
060450106004229	060450101002025
060450107007023	060450101002027
060450106004013	060450101002021
060450107005006	060450101002054
060450106004225	060450118001084
060450106003011	060450102004264
060450118002042	060450102005051
060450102005000	060450102005041
060450102001096	060450102004149
060450102004113	060450106001014
060450106004205	060450106004216
060450106004208	060450106004227
060450106001088	060450106004241
060450108011132	060450102001018
060450106001099	060450102001087
060450107002032	060450102001013
060450106004079	060450108011090
060450106001073	060450101002036
060450106001044	060450101001222
060450106003015	060450101001742
060450106004010	060450101001551
060450106001089	060450118001103
060450101001197	060450102001097
060450101002007	060450102004125
060450101002058	060450106001133
060450101001700	060450106004092
060450101001356	060450106003012
060450101003055	060450102002378
060450118001307	060450106004021
060450118002019	060450106001049
060450118002022	060450106001082
060450118001121	060450106002003
060450118001029	060450101001183
060450102004120	060450101003065

060450101001803	060450102004263
060450118001128	060450102005050
060450118001286	060450102005078
060450118001306	060450102001155
060450101002030	060450102005010
060450101001415	060450102005049
060450118002069	060450102004176
060450118002017	060450102002385
060450118001125	060450102001089
060450118002079	060450101001345
060450102004139	060450118002016
060450102005074	060450118001328
060450102001060	060450106004049
060450102005003	060450101001366
060450106001142	060450118002051
060450106001109	060450118002083
060450107002042	060450118001122
060450118001085	060450118002030
060450118001044	060450101001771
060450118002043	060450101001344
060450118002011	060450101002004
060450118002050	060450101001221
060450118002052	060450102001082
060450102001061	060450106001107
060450101001760	060450106001003
060450101001408	060450106004032
060450101001417	060450106001087
060450101002002	060450106001092
060450101002035	060450106001103
060450101002028	060450106004085
060450101001361	060450102005028
060450101001710	060450101001360
060450118001341	060450101002001
060450102004276	060450101002055
060450107007006	060450101003010
060450106004031	060450101003026
060450106004029	060450101001347
060450107001010	060450118001300
060450106001140	060450102004175
060450102002367	060450102005034
060450107004020	060450101002006
060450107006018	060450101001758
060450107006019	060450101002013
060450118001351	060450101003049

060450101001706	060450106004000
060450101001675	060450106004017
060450102004108	060450118001138
060450102005004	060450118002013
060450106004035	060450118002073
060450106004243	060450118001105
060450101001397	060450102004123
060450118002020	060450118002058
060450118002045	060450118001006
060450102005040	060450118001150
060450102004302	060450101001786
060450102001101	060450106004098
060450106004086	060450106004080
060450106001217	060450106001080
060450106001176	060450106001102
060450118001304	060450102001028
060450118001097	060450102005059
060450102004185	060450106001005
060450102001020	060450106001086
060450102004172	060450106004206
060450102005023	060450106001151
060450102005021	060450106004218
060450102005058	060450102001091
060450118002068	060450106001173
060450118002018	060450106004226
060450101001405	060450107001003
060450101001407	060450106004008
060450101001452	060450106004182
060450101001737	060450106003020
060450102004051	060450106003010
060450102005038	060450106001143
060450102005025	060450118001094
060450102005037	060450118001063
060450102004134	060450118001101
060450102004118	060450118001397
060450101003021	060450118001098
060450106004189	060450118002015
060450106004204	060450102002377
060450106004185	060450102001172
060450107007001	060450107007019
060450107004013	060450107001019
060450107006020	060450106004002
060450106001141	060450107001001
060450107002046	060450101001699



060450118002010	060450101002060
060450101003011	060450101001691
060450101003061	060450102001050
060450101001757	060450102005057
060450101003079	060450101002014
060450101001190	060450101001318
060450118001130	060450101003086
060450118001327	060450101002047
060450102005036	060450106004103
060450101001721	060450106001131
060450101001451	060450106003029
060450118001198	060450102004265
060450118001027	060450107003028
060450102001081	060450106003017
060450102004122	060450107003033
060450102005070	060450107006017
060450101001633	060450102001042
060450118001142	060450102001041
060450102004110	060450102001123
060450101001434	060450102001122
060450118001137	060450102001135
060450118001134	060450102001133
060450118001181	060450102001052
060450118002008	060450102001051
060450118002000	060450102001132
060450118001107	060450102001117
060450101001400	060450102001128
060450102004260	060450101001327
060450101001679	060450102001098
060450102004103	060450102001126
060450102004105	060450108022015
060450102005024	060450117001013
060450101001363	060450118001047
060450101001225	060450113001041
060450101003033	060450113002017
060450101003037	060450118001041
060450102004174	060450109004008
060450102004184	060450108013056
060450102005002	060450109002072
060450102005011	060450109001057
060450102005014	060450115005018
060450102001158	060450109001036
060450101001681	060450117001012
060450101002038	060450115001012

060450117001029	060450117001143
060450109001144	060450116001053
060450117001130	060450117004021
060450113003024	060450109004017
060450117001142	060450108021062
060450113003060	060450108021004
060450117005062	060450108021130
060450109001134	060450108021043
060450108013047	060450108021041
060450108014088	060450116003031
060450109002016	060450109003014
060450115002003	060450109003091
060450109001205	060450109003084
060450109001052	060450117001119
060450108013069	060450113001014
060450113002095	060450117002028
060450117001108	060450108011134
060450117005050	060450106002049
060450113003015	060450106002061
060450118001009	060450118001036
060450108011052	060450118001042
060450108011106	060450118001062
060450108014036	060450108021007
060450108013058	060450108021034
060450109003023	060450108021080
060450109003018	060450113003063
060450109003019	060450117005047
060450108011109	060450116003027
060450108013063	060450117001120
060450108021134	060450108021039
060450108022042	060450113002104
060450109001105	060450113003019
060450109002006	060450108013068
060450109002023	060450108021124
060450117002011	060450108021119
060450117001146	060450113003100
060450113003095	060450109001164
060450114003019	060450108011013
060450109001046	060450108011012
060450109001050	060450113003089
060450108013049	060450108022055
060450108013072	060450108013014
060450113003069	060450108022021
060450113003085	060450109003070

060450109001047	060450109001141
060450108011050	060450108013054
060450117001049	060450109002082
060450106001110	060450108013022
060450108021027	060450108014072
060450108021074	060450108022036
060450108021076	060450108011061
060450117005049	060450108022035
060450109001011	060450106002014
060450109001019	060450113002105
060450109001029	060450109001147
060450108022016	060450108022063
060450117002021	060450108021084
060450117001032	060450108021111
060450114003023	060450109001068
060450108011055	060450108011054
060450108021099	060450108022025
060450108021125	060450108013010
060450113003018	060450108014069
060450117001153	060450108011045
060450114003017	060450106002010
060450117004033	060450108022064
060450117001103	060450108021108
060450118001033	060450108022070
060450108022011	060450108021069
060450108022017	060450115002025
060450108022049	060450113001052
060450108014032	060450113001032
060450108013050	060450109003098
060450108011092	060450108013024
060450109003011	060450108013046
060450117001067	060450108013043
060450117001150	060450109001187
060450108012009	060450115005011
060450108022053	060450113003075
060450108021068	060450108013021
060450108022045	060450108022020
060450109001061	060450108022028
060450108011063	060450108022068
060450108011100	060450108021056
060450108022051	060450108013003
060450113003093	060450108013065
060450113003071	060450109001067
060450113002005	060450109001163

060450109002064	060450108011008
060450109002021	060450108022059
060450108011108	060450108012018
060450108011002	060450108022018
060450108013025	060450109001045
060450108013075	060450109003035
060450113003088	060450106002018
060450116003030	060450118001043
060450116001042	060450118001046
060450109003021	060450108022066
060450108021035	060450108012011
060450108021050	060450108022062
060450108011005	060450108021081
060450109001101	060450108022013
060450109003040	060450109001199
060450117005058	060450108014083
060450113003020	060450109001025
060450113001019	060450108011035
060450117002043	060450117001048
060450113003092	060450117002023
060450108013016	060450117005020
060450108021117	060450116003017
060450108011073	060450108013026
060450109001000	060450108013073
060450108011060	060450115001023
060450108012017	060450108011000
060450108022072	060450108014070
060450118001398	060450108011057
060450109001031	060450109002010
060450108011062	060450109004006
060450108021100	060450109004003
060450113003087	060450108013066
060450108014068	060450108013064
060450108011125	060450109003029
060450113002013	060450108011058
060450113003067	060450108022037
060450113003062	060450106004196
060450113002065	060450108022019
060450113002004	060450108022050
060450117002034	060450108013008
060450108012008	060450108022060
060450108011043	060450108022043
060450108013037	060450118001034
060450109003030	060450108022005

060450108011046	060450113003033
060450109001127	060450117005033
060450108021135	060450117005034
060450108013055	060450117005041
060450109002086	060450118001061
060450109003104	060450118001018
060450109003031	060450117001027
060450108011081	060450117001112
060450108011064	060450117004030
060450108021058	060450117004014
060450117001005	060450108022032
060450117001001	060450108011010
060450108013030	060450109004030
060450108013082	060450108014012
060450113002010	060450109001002
060450106004192	060450117005036
060450108021085	060450113003091
060450108022022	060450113001021
060450106002015	060450106002016
060450109001206	060450113003028
060450109001161	060450113003059
060450108011083	060450113003098
060450108011053	060450113003029
060450108011082	060450118001038
060450108012014	060450117004023
060450108021038	060450117001116
060450109001020	060450117004001
060450109004005	060450113002096
060450114003014	060450116003011
060450115005010	060450108013062
060450117001155	060450106004195
060450117001156	060450106002060
060450109003036	060450117003012
060450108012007	060450117002030
060450108011075	060450118001045
060450106002058	060450118001056
060450109001193	060450117001028
060450109001092	060450117001025
060450109001038	060450113002093
060450109003012	060450118001060
060450108011118	060450118001055
060450113002092	060450117005040
060450113002053	060450117005045
060450117004022	060450117005037

060450117005046	060450109001140
060450108022038	060450109002046
060450108022069	060450109002066
060450108021059	060450109002037
060450109001157	060450116003032
060450108014021	060450117001147
060450109003102	060450117001118
060450108022039	060450117002010
060450108014065	060450109003071
060450108021045	060450108011009
060450108014011	060450108011059
060450109002041	060450106001177
060450108013028	060450108021042
060450108013053	060450108021075
060450108011080	060450109003016
060450117001003	060450108021105
060450117001026	060450106002062
060450117001138	060450108011079
060450118001020	060450109001021
060450114004013	060450109001024
060450116001052	060450109001012
060450118001059	060450108022027
060450117004016	060450106002017
060450115005000	060450108011121
060450118001014	060450108013012
060450113003037	060450108014063
060450117005024	060450108013080
060450113003070	060450108021060
060450117005065	060450108021057
060450109001044	